

Tracer Study Report

(Graduates of 2018)

Damak Multiple Campus

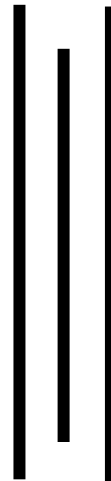
Damak, Jhapa



Submitted to:

University Grants Commission

Sanothimi, Bhaktapur



Submitted by:

Damak Multiple Campus

Damak, Jhapa

ACKNOWLEDGEMENT

We are thankful to University Grants Commission (UGC) Nepal for valuable evaluation to our campus for Accreditation of our quality. We appreciate the efforts of our teaching and non-teaching staff in this regard. The campus Administration formed a Tracer Study team to get the feedback of our students who completed their graduate and postgraduate degrees in 2018. We have followed the guidelines and questionnaire provided by UGC, Nepal. We also appreciate our students for their valuable inputs and suggestions for the preparation for this report.

We acknowledge the assistance provided by the guardians and well-wishers during the preparation of this Report. We are thankful to all who have supported us in this regard directly or indirectly. We appreciate the efforts made by Shravan Kumar Chaudhary(Co-ordinator), Padam Ghimire, Juda Khadka, Tulashi Phuyal and the Technical Assistance Nabin Dhungana, in collecting and processing the data. Without their constant efforts this study would not have been possible.

Campus Chief
Damak Multiple Campus
Damak, Jhapa

EXECUTIVE SUMMARY

Damak Multiple Campus, one of the leading public academic institutions in the country, has its own reputation in the national scenario. It was established in 2038(B.S.) with introduction of Management Faculty. In a short span of time, it has updated not only its infrastructures, but also other physical facilities and academic qualities. At present the campus has introduced various academic programs like MBS, MA, BBA, BCA, BSW, BBS, BSC, BA, and BED etc. to meet the expanding demands of present days. Besides academic programs, the campus focuses on other curricular and personality development activities for all round developments of the students. With the advent of UGC, Nepal in 2068 BS, the campus has emerged as an academic hub in the eastern region. It has also brought radical modifications almost in all the aspects of the institution. DMC has been successful to win the heart of the public in general and its stakeholders.

Thus, it is imperative for the campus to carry out surveys and prepare a tracer study report to find out the overall performance of its graduates in their respective fields and workplaces. Damak Multiple Campus has already conducted this kind of tracer study previously, and this is a continuation the same. The present tracer study of its graduates was conducted in 2018 AD (2075 BS) with the objective of finding their employment status. The study reflects the relevance of its programs and the status of quality. It is also helpful in enhancing their skills and efficiencies which results in fulfilling the requirements of the expanding job markets. In the same vein, it sheds light on the teaching-learning processes and provides an opportunity for further reforms.

The Tracer Study encompassed the graduates of all the faculties: Management, Science, Humanities, Education, and the Master's Degree graduates of the Faculty of Management. The total number of graduates in Bachelor and Master's levels was 194. The tracer study team made a survey of 147 students: BBS 56(Male 24 + Female 32), BA 04 (Male 03 + Female 01), Science 38 (Male 26 + Female 12), Education 14 (Male 07+ Female 07) and MBS 35(Male 17 + Female 18). The survey team collected information based on their participation in the study. The students filled out the tracer study forms and submitted to the campus.

A five-member team, comprising both teaching and non-teaching staff, prepared the Tracer Study Report. The team carried out the study by applying the survey questionnaire provided by the UGC, Nepal as an approach for data collection. The reflection of the questionnaire included the number of total graduates, the status of employment, job categories, and their experiences at DMC etc. Of the total traced students, 42.17% (54 FS + 8 E&F) students were continuing their further studies, 89.09% students were involved in public and private sectors, 10.90% were in government sectors. Similarly, 03 students were self-employed. The study found that 35 students (23.80%) were unemployed, 52 students had full-time jobs and 3 students (37.41%) had part-time jobs.

In total, there were 77 male and 70 were female participants. Likewise, the number of participants from Bachelor Level was 112 (Male 60- Female 52), and 35 (Male 17- Female 18) participants from Master's Level. There were 47 graduates who were employed, while there were 8 graduates who were pursuing further studies with employment. The number of students who were involved only in studies was 54 and 3 self-employed graduate. 35 were completely unemployed. Among all the faculties, the highest number of employed graduates was from

Management Faculty. The total number of EDG students was 15, and there were only 4 students belonging to the Dalits category.

Similarly, the ethnic categories analysis shows that the highest number of graduates belonged to Brahmin/Chhetris- 83(56.46%) category in all the faculties, followed by Adhibashi/Janajati - 45 (30.61%) group, 4 students were in the Madhesi group. Only 4 Dalits were found in the study, and 15 (10.20%) students in EDJ group.

The largest number of students falls in between (21-23) age-group. Their number was found 80 (54.42%). This age group was followed by (24-28) age-group 39 (26.53%). Likewise, 22 students fall in the (29-33) age-group. Only one student was found in (Above 42) age- group and 2 student was found very senior. The students of Master's Degree were found much senior in the age-group analysis study. They belonged to 29- 33 and 24-28 age-groups. Some graduates of Bachelor level also belonged to the same age-groups.

The Tracer Study Report has been organized in five sections: (a.) Introductory Section (b.) Data Presentation and Analysis (c.) Findings of the Study (d.) Implications to the Institutional Reform, and (e.) Conclusion and Recommendations. In the Introductory Section, the background of the tracer study, its rationale and objectives have been described. It also discusses the approach applied in the process of data collection and its analysis. The Second Section presents the data collection and its analysis. It includes the status of employment, job categories, job experiences of the graduates, the relevance of present programs offered by the campus, and related issues. The Third Section sums up the major findings of the study: the number of the graduates in 2018 (AD) from various faculties, and their employment status etc. The Fourth Section deals with some of the implications to institutional reforms. The Final Section is the conclusion drawn by the team after the study. It provides some recommendations for further improvements as per the feedbacks of the students.

LIST OF TABLES

Table No.	Topic	Page No.
Table 1:	Profile of the graduate_____	4
Table 2 :	Tracer study status_____	5
Table 3:	Caste wise composition of tracer study completed_____	6
Table 4:	The age-group distribution_____	6
Table 5:	Employed status of the graduate_____	7
Table 6:	Further study status_____	8
Table 7:	Job categories employment students_____	8
Table 8:	Strength and weakness of campus and campus program_____	14
Table 9:	Extracurricular activities_____	15
Table 10:	Problem solving skill_____	16
Table 11:	Wok placement/attachment_____	16
Table 12:	Work placement/attachment/ internship_____	16
Table 13:	Learning environment_____	17
Table 14:	Teacher student relationship_____	17
Table 15:	Education delivery efficiency_____	18
Table 16:	Library facility_____	18
Table 17:	Laboratory facility_____	19
Table 18:	Canteen facility_____	19
Table 19:	Sports facility_____	20

LIST OF FIGURES

Figure No.	Topic	Page No.
Figure 1:	The age-group distribution_____	6
Figure 1:	Composition of graduates in management_____	9
Figure 2:	Composition of graduates in humanities_____	10
Figure 3:	Composition of graduates in education_____	10
Figure 4:	Composition of graduates in science_____	11
Figure 5:	Composition of graduates in MBS (Master's)_____	12
Figure 6:	Composition of graduates in humanities_____	13
Figure 7:	Faculty –wise employment composition of graduates_____	13
Figure 8:	Strengths and weaknesses of campus and campus program_____	14

ABBREVIATIONS

B.Ed.	Bachelor of Education
B.Sc.	Bachelor of Science
BA	Bachelor of Arts
BBS	Bachelor of Business Studies
DMC	Damak Multiple Campus
E	Employed
E&FS	Employed and Further Studies
EDJ	Educationally Disadvantaged Janajatis
F.G.	Female Graduate
F.T.	Full Time
FS	Further Studies
GTSS	Graduate Tracer Student Status
HERP	Higher Education Reform Project
INGO	International Non- Governmental Organization
M.G.	Male Graduate
MBS	Master of Business Studies
MC	Management Committee
MPC	Master Degree Program Coordinator
NGO	Non- Governmental Organization
P.T.	Part Time
QAA	Quality Assurance and Accreditation
RMC	Research Management Cell
S	Self Employed
T.G.	Total Graduate
TU	Tribhuvan University
U	Unemployed
UGC	University Grants Commission

TABLE OF CONTENTS

COVER	A
ACKNOWLEDGEMENT	B
EXECUTIVE SUMMARY	C
LIST OF TABLES	E
LIST OF FIGURES	F
ABBREVIATIONS	G
CHAPTER: ONE	1
1.1 Introduction:	1
1.2 Background / Rationale:	1
1.3 Objectives of the study:	2
1.4 Institutional Arrangements to Conduct the Study:	2
1.5 Data collection- instruments and approach	2
1.6. Methodology:	3
1.7. Scope and limitation of study:	3
CHAPTER: TWO	4
DATA PRESENTATION AND ANALYSIS:	4
2.1. The Profile of the Graduates:	4
2.2. The Profile of the Tracer Students:	5
2.3. The caste -wise composition of tracer study	6
2.4 The age-group distribution of the graduates.	6
2. 4. Employment Status of the Graduates:	7
2.5. Further Study Status of the graduates:	8
2.6. Job Categories / Sectors:	8
2.7 Faculty-wise Analysis:	9
2.7.1 Faculty of Management (Bachelor Level)	9
2.7.2 Faculty of Humanities (Bachelor Level)	10
2.7.3 Faculty of Education (Bachelor Level)	11
2.7.4 Faculty of Science (Bachelor Level)	12

2.7.5 Faculty of Management (Master's Degree)	13
2.7.7. Faculty- wise Employment composition of graduates	14
2.8. Issues Related to Quality and Relevance of Program:	15
2.9. Effectiveness of Extracurricular activities	16
2.10. Effectiveness on Problem solving skill	17
2.11. Effectiveness on Work placement/attachment/Internship	17
2.12. Teaching - Learning Environment:	18
2.14. Teacher - Student Relationship	18
2.15. Quality of Education Delivery	19
2.16. Library Facility:	19
2.17. Laboratory Facility	20
2.18. Canteen and Urinals Facility	20
2.19. Sports Facility	21
CHAPTER: THREE	22
MAJOR FINDINGS OF THE STUDY:	22
3.1 Employment Status of the Graduates:	22
3.2 Issues Related to the Quality and Relevance of Programs:	22
3.3 Implications to Institutional Reform:	23
3.4 Conclusion and Recommendations:	23

CHAPTER: ONE

1.1 Introduction:

The strength of any academic institution relies on its faculties, programs offered, research activities, extra-curricular activities, trainings, outreach programs, and proper co-ordination among its stakeholders etc. With this purpose the tracer study was conducted to identify the institution's strengths and shortcomings so that it can keep pace with the present day market demands and further improvements can be achieved. The campus carried out the tracer study of the graduates of both levels who completed their degrees in 2018 (AD). The main focus of the study was to find out the status their results and the employment status. It is helpful to review and evaluate the relevance of programs being offered to the students to maintain its academic standards. The campus has maintained individual profiles of its graduates. The study provides valuable suggestions to make learning-teaching processes effective and better. This kind of task helps the campus realize its impact on society, quality education, and realization of its products in the related fields. Out of 194 graduates, 147 graduates were included in the study from Bachelor (112) and Master's (35) levels.

The Tracer Study Report sums up the important feedbacks provided by the students. So far as the approaches are concerned, the questionnaire provided by the UGC, Nepal was used to collect data of the graduates who had completed their respective levels and also their employment status. Some difficulties were faced by the team as all the respondents didn't submit the survey forms to the team / campus. Similarly, there was a certain amount of inability of gathering information due to their residing locations in remote mountainous regions and unavailability of their contact numbers.

This introductory section encompasses the background of Damak Multiple Campus, rationale and objectives of the study, data collection and analysis, scope and limitations, findings, implications to institutional reforms, the conclusion and recommendations.

1.2 Background / Rationale:

DMC was established in 2038 B.S. with its affiliation to TU with the objective of providing higher education in the local area. It was founded as a community campus to meet the needs of higher education in Jhapa, eastern Morang, southern Ilam and Panchthar districts. In the beginning phase, the campus introduced the Faculty of Management (Intermediate level). The H.S.E.B. program (+2) in Science was introduced in 2056, and later on the Faculties of Education, Management, and Humanities were introduced. Gradually, the campus expanded Bachelor Level programs in all the faculties- BBS / B.Com. (2045), BA (2050), BSC (2061), MA (2061), BED (2063), MBS (2065), BSW (2075), BCA (2075) and BBA (2075)

Damak Multiple Campus has been continuously expanding new academic programs to meet the demands of job markets. This is the reason that the catchment area of the campus is ever expanding and it is one of the most sought-after public academic institutions in the eastern region. The frequent visits of public campuses from remote areas to make a study of Damak

Multiple Campus show its impact. The campus provides both theoretical and practical knowledge and trainings to the students. It is providing interdisciplinary education to the students to develop professionalism and leadership through its innovative and creative services. Damak Multiple Campus is fully committed to promoting and maintaining academic excellence in the eastern region. For this purpose, the campus has managed new technologies and innovations in the classrooms for effective delivery of learning-teaching processes.

The Tracer Study was made with the focus on collecting accurate information regarding the status employment of its graduates in 2018. The study provided an opportunity to identify the quality and relevance of higher education in the job markets, their working conditions, the fields of their work, and job satisfaction etc.

1.3 Objectives of the study:

The major objective of the study was to trace the graduates to find out their employment status as well as their performance level at workplaces and to maintain official relationship with the Alumni of the campus. The other specific objectives of the study are as follows:

- i. Identify the status of graduates of Bachelor and Master level programs
- ii. Analyze the work place performance level of employed graduates
- iii. Get feedback for the betterment of the institution
- iv. Understand the different ways in which graduates learn about job opportunities as well as entrepreneurship prospects
- v. Understand the need to modify existing policies and develop new policies to adapt to the changing environment
- vi. Set a mechanism of identifying its products involved in jobs, further studies, their own business and their interests of involvement
- vii. Find its academic standard in the regional and national levels
- viii. Evaluate the quality and relevance of higher education programs.

1.4 Institutional Arrangements to Conduct the Study:

The Campus formed a Task Force to carry out the survey of the students. The team comprised of teaching and non-teaching staff of DMC. The team collected the primary data, extended social networks, contacts, and got assistance from its Alumni Association. It extended the personal contact to the graduates. Then, the completed study was overviewed and monitored by HERP Secretariat. The survey team accomplished the consigned task within a time frame.

1.5 Data collection- instruments and approach

The data was collected by applying a survey method by the tracer study team. It was carried out with the help of the questionnaire provided by the UGC, Nepal. The questionnaire that contained various information, personal details, and contact numbers was provided to the respondents by the members of the team to gather information from the graduates in 2018. The number of the

respondents was divided into various sections: number of respondents, gender, ethnicity, work places, employment category, employers, and pursuing further studies etc.

1.6. Methodology:

The methodologies applied for data collection included: questionnaire, telephone contacts, personal interviews, home visits, e-mails, personal contact, and online survey etc. The provided questionnaire was designed to collect information of the areas given below:

- i. Impact of research and trainings on personal, professionalism, and developments
- ii. Employment status
- iii. Job categories and satisfaction
- iv. Students' experiences and trainings at Damak Multiple Campus
- v. Relevance of their courses and suitability for job placement

1.7. Scope and limitation of study:

The study was conducted within six months after the publication of their results. The team received the filled out questionnaire form from the students. But the expected responses couldn't be achieved as some of the students didn't submit the form due to various factors including their reluctance, changing residential circumstances, and lack of telephone contact etc. One hundred and forty-seven (147) students completed and submitted the questionnaire form to the team / the campus. A substantial number of male (77) and female (70) graduates ardently responded to the questionnaire. The scope of study was wider as the study was done of the students who were working inside the country at various work places. The study was limited to:

- i. The study was conducted in 2018 of the graduates
- ii. The total number of students who participated in the study was only included (i.e. 147)
- iii. Those who didn't submit their transcripts to the campus were not studied
- iv. The study covers expectations of the graduates after choosing particular program and how far their expectations are met

CHAPTER: TWO

DATA PRESENTATION AND ANALYSIS:

2.1. The Profile of the Graduates:

The tracer study of the graduates was conducted by a team comprising both teaching and non-teaching staff of Damak Multiple Campus in 2018 (AD). As it has been already mentioned, the total number of the students was 194, and out of which 147 participated in the study carried out by the team. All the students participated in and responded to the study carried out by the team. The number of Bachelor level graduates was -112 (Male 60 + Female 52), and of Master's level was -35(Male 17 + Female 18). There were 15(10.20%) Educationally Disadvantaged Janajati and 4 (2.72%) Dalit graduates.

The tracer study team applied the questionnaire provided by the UGC, Nepal, as a tool for data collection. The questionnaire form was distributed to the students. They submitted the filled-out forms with responses to the study team / campus. In some cases, the team also used other instruments and approaches like e-mails, telephone contacts, home visits, interviews etc. The students' responses have been presented in the following tables and graphs:

Table: 1 Profile of the graduate.

S.N.	Faculty	Total Graduates	Male Graduates	Female Graduates	Educationally Disadvantaged Graduates	
					Educationally Disadvantaged Janajatis	Dalits
Bachelor Level	B.B.S.	77	30	47	5	0
	B.Ed.	18	7	11	3	3
	B.A.	6	4	2	2	1
	B.Sc.	42	29	13	2	1
Bachelor's Total		143	70	73	12	5
Master's Level	MBS	51	19	32	7	1
Master's Total		51	19	32	7	1
Grand Total		194	89	105	19	6

2.2. The Profile of the Tracer Students:

T.S. = Tracer Study, M.G.= Male Graduates, F.G.= Female Graduates, E.D.G.= Educationally Disadvantage Graduates, EDJ=Educationally Disadvantaged Janajatis, D= Dalits , E= Employed, F.S.= Further Studies, E&F= Employed & Further Studies , S.E.= Self – Employed, U= Unemployed

Table 2: Traced study status

S.N.	Faculty	T.S.	M.G.	F.G.	E.D.G.		E	F.S.	E&FS	S.E.	U
					E.D.J.	D.					
Bachelor	B.B.S.	56	24	32	5	0	7	30	7	1	11
	B.Ed.	14	7	7	1	1	5	2	1	0	6
	B.A.	4	3	1	2	1	1	2	0	0	1
	B.Sc.	38	26	12	3	1	9	20	0	0	9
Bachelor's Total		112	60	52	11	3	22	54	8	1	27
Master's	MBS	35	17	18	4	1	25	0	0	2	8
Master's Total		35	17	18	4	1	25	0	0	2	8
Grand Total		147	77	70	15	4	47	54	8	3	35

There were 194 graduates who completed their respective degrees from Damak Multiple Campus in 2018AD. Some of them couldn't be contacted, while others didn't submit the filled out forms to the team / campus. So the study was carried out of only 147 graduates who actively participated in the study. In total, there were 77 male participants and 70 were females. Likewise, the number of participants from Bachelor Level was 112 (Male 60- Female 52), and 35 (Male 17- Female 18) participants from Master's Level. There were 47 graduates who were employed, while there were 08 graduates who were pursuing further studies with employment. The number of students who were involved only in studies was 54. Three students were found self employed and 35 were completely unemployed. The total number of EDG students was 15 and of Dalits was 4. The highest number of employed graduates was from Management Faculty (90.90%)

2.3. The caste-wise composition of tracer study

Table 3: Caste- wise composition of tracer study

		Ethnicity					
		Brahmin/ Chhetri	Adhibashi/ Janajati	Madhesi	EDJ	Dalit	Total
Program Completed	BBS	32	18	1	5	0	56
	B.Ed.	3	10	0	1	1	14
	BA	0	2	0	2	1	4
	B.Sc.	27	7	1	3	1	38
	MBS	21	8	2	4	1	35
Total		83	45	4	15	4	147

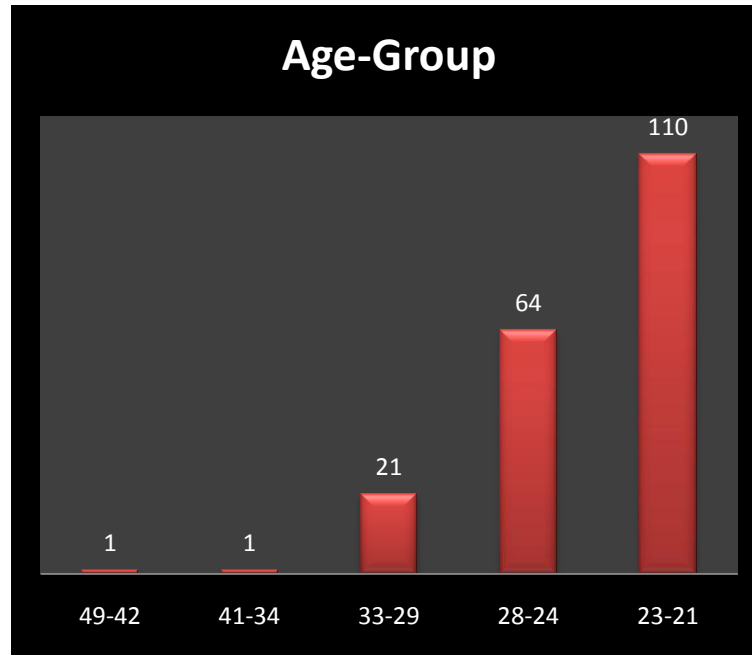
The highest number of graduates belonged to Brahmin/Chhetris- 83 (56.46%) category almost in all the faculties, followed by Adhibashi/Janajati -45 (30.61%) group, 4 students there were Madhesi category. Only 4(2.72%) Dalits were found in the study, and 15(10.20%) students belonged to EDJ categories like Tamang, Tajpuriya, and Dhimal etc.

2.4 The age-group distribution of the graduates.

Table: 4 The age-group distribution.

Age Group	BBS	B.Ed.	BA	B.Sc.	MBS	Total
Above 42			1		1	2
41-34	1	1			2	4
33-29	1	2			19	22
28-24	13	5	1	7	13	39
23-21	41	6	2	31		80
147						

Figure 1 : The age-group distribution.



The largest number of students falls in between (21-23) age-group. Their number was found 80 (54.42%). This age group was followed by (24-28) age-group 39 (26.53%). Likewise, 22 students fall in the (29-33) age-group. Only one student was found in (Above 42) age- group and 2 student was found very senior. The students of Master's Degree were found much senior in the age-group analysis study. They belonged to 29- 33 and 24-28 age-groups. Some graduates of Bachelor level also belonged to the same age-groups.

2. 5. Employment Status of the Graduates:

P.T.=Part Time, F.T.= Full Time, E+F.S= Employed +Further Study, E.=Employed

Table 4: Employment Status of the graduates.

Sn	Faculty	Employment Status							
		M	F	T	P.T	F.T	Total (E+F.S)	Only E.	Self E.
1	B.B.S.	7	7	14	0	14	7	7	1
2	B.Ed.	3	3	6	2	4	1	5	0
3	B.A.	1	0	1	0	1	0	1	0
4	B.Sc.	8	1	9	0	9	0	9	0
5	M.B.S.	13	12	25	1	24	0	25	2
Total		32	23	55	3	52	8	47	3

The tables and figures show the employment status of traced graduates who completed their Bachelor and Master's levels from Damak Multiple Campus in 2018.

Most of the graduates were employed in the private sectors. Among all the programs, the highest number of graduates (i.e. 25+14 = 39) from the Management Stream was employed in the private sector. There were 38 students were full-time job holders and 1 graduate were part-time job holders from Management Faculty only. In total, there were 55 graduates employed. Among them, 52 graduates were full-time job holders and 02 graduates were part-time job holders. 03 students were self-employed. It also shows there were a greater number of opportunities available in the private sector than all other sectors.

2.6. Further Study Status of the graduates:

The employment and further study status of the graduates has been shown in the tables.

Table 5: Further study status

Program	Further Study Only			Further Study with Employed		
	Male	Female	Total	Male	Female	Total
BBS	11	19	30	4	3	7
B.Ed.	1	1	2	1	0	1
BA	1	1	2	0	0	0
B.Sc	12	8	20	0	0	0
MBS	0	0	0	0	0	0
Grand Total		54			8	

Note:- (Further Study Only = 54 , Further Study with Employed = 08)

2.7. Job Categories / Sectors:

Table 6: Job categories in employment student

Sectors	B.B.S	B.Ed.	B.A.	B.Sc.	MBS	TOTAL

	M	F	T	M	F	T	M	F	T	M	F	T	M	F	T	
Private	7	5	12	2	0	2	1	0	1	7	1	8	10	11	21	44
Public	0	1	1	0	1	1	0	0	0	0	0	0	2	1	3	5
NGO/INGO	0	0	0	0	0	0	0	0	0	0	0	0	0	0	0	0
Government	0	1	1	1	2	3	0	0	0	1	0	1	1	0	1	6
Total	14		6			1			9			25			55	
Self Employment																
	1	0	1	0	0	0	0	0	0	0	0	0	2	0	2	3

Out of the 112 Bachelor graduates and 35 Master's level graduates, 58 students were employed including 03 self-employed graduate in various sectors. Among them, 44 graduates were involved in the private sector, 05 were in the public sector, while 6 students were in the government jobs. The figure of employment has been found higher form Management Faculty -39(Management BBS+Management MBS) (70.90%). There were 35 unemployed graduates and 62 of them were pursuing further courses along with employment. There were 54 graduates involved only in studies. Some of them reported that they were preparing for jobs.

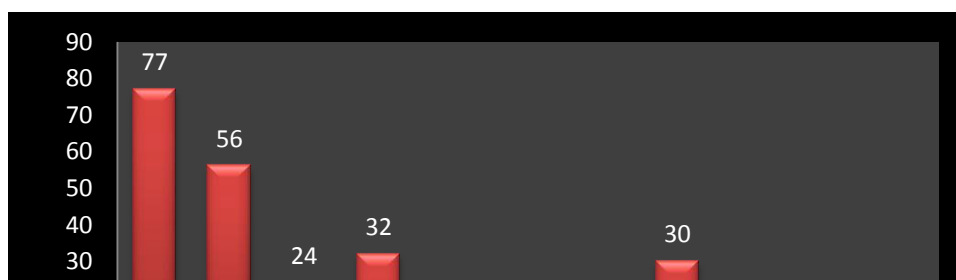
2.8. Faculty-wise Analysis:

2.8.1 Faculty of Management (Bachelor Level)

Among the 77 graduates from Faculty of Management, only 56 of them could be approached, and 21 graduates could not be contacted by any means. The number of males was 24 and of females 32, EDJs 5 and Dalits 0. 12.5 % of them were only employed, 19.64% were unemployed and 12.5% were employed and were also involved in further studies at different institutions. 30 students of them were found only pursuing their higher studies. The number of graduates who couldn't be contacted was 21. The figure below shows the details related to the graduates of Faculty of Management.

(E+FS= Employed & Further Study, U=Unemployed, E =Employed)

Figure 1: Composition of graduates in management



Graduates status summary :

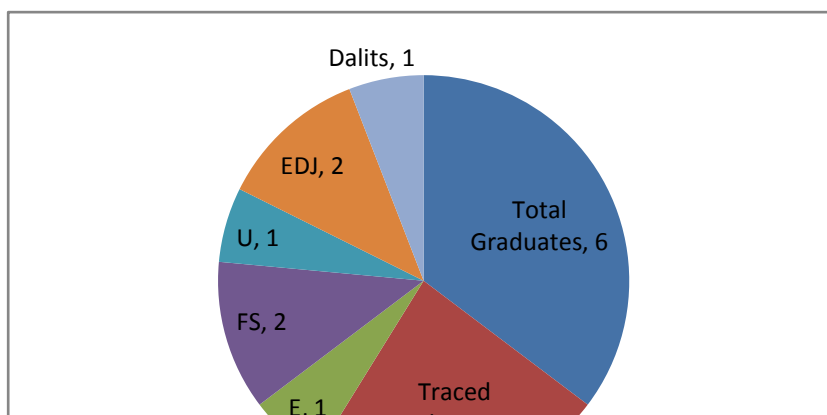
Number of students enrolled in Master Degree in various Institutions :

-
- Total Graduates : 77
 - Traced Graduates : 56
 - Untraced : 21
 - Employed (Without Studies) :7
 - Further study (Without Employed) :30
 - Employed & Further Studies : 7
 - Unemployed : 11
 - Male : 24
 - Female : 32
 - EDJ : 5
 - Dalit : 0
- Damak Multiple Campus = 23
 - Mechi Multiple Campus = 1
 - Post Graduate Campus = 1
 - Nepal Commerce Campus = 1
 - Shankhardev Campus =2
 - TU Central Campus = 9
 - Snatakottar Campus =1

2.8.2 Faculty of Humanities (Bachelor Level)

There were 4 graduates from Faculty of Humanities involved in the study. Out of which 3 were male graduates and 1 was female graduate. 2 was EDJ graduate and Dalit groups were 1 involved in the study. There was 1 graduate who was employed and 2 students continuing his further studies.

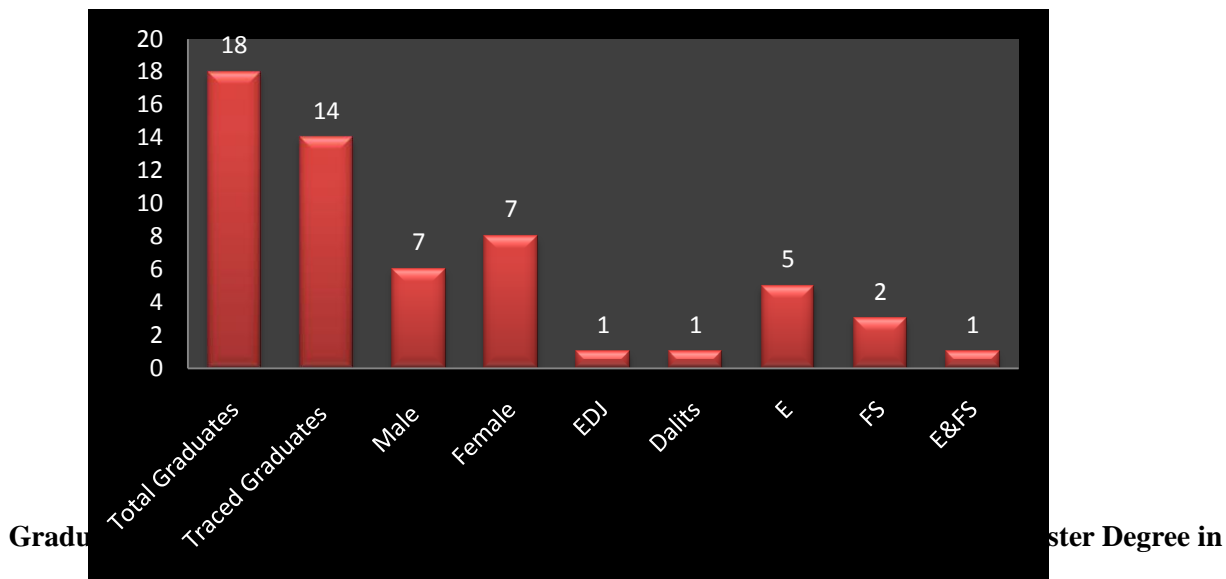
Figure 2: Composition of graduates in humanities



2.8.3 Faculty of Education (Bachelor Level)

Among the 18 graduates from Faculty of Education, only 14 of them could be approached. 7 of them were males. The female graduates were 7 and EDJs 1 and Dalits 1. The number of employed graduates from Faculty of Education was 5. Among the 5 employed graduates, 3 were working in the teaching field and 2 were working as assistant level employees in private companies. 1 students were found pursuing their further studies in various institutions along with jobs, while 2 students were involved in further studies only and 6 student were found unemployed. The figure below shows the details related to the graduates of Faculty of Education.

Figure 3: Composition of graduates in education.

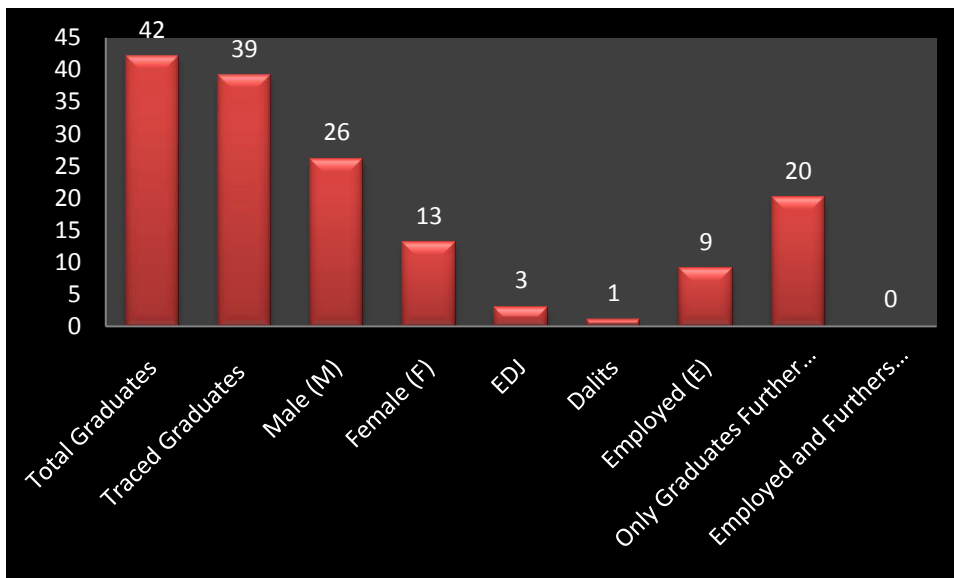


- Total Graduates : 18
- Traced Graduates : 14
- Untraced : 4
- Employed (Without Studies) : 5
- Further study (Without Employed) :2
- Employed + Studies : 1
- Unemployed : 6
- Male : 6
- Female : 8
- EDJ : 1
- Dalit : 1
- Uurlabari Multiple Campus = 1
- Kankai Multiple Campus = 1
- Damak Multiple Campus = 1

2.8.4 Faculty of Science (Bachelor Level)

Among the 42 graduates from Faculty of Science, only 38 of them could be approached, 26 of them were males. The female graduates were 12, and EDJs 3 and Dalits 1. The number of employed graduates from Faculty of Science was 9. Among the 9 employed graduates, 7 were working in the field of teaching and others were working as assistant level employees in private companies. 20 students were found pursuing higher studies. No students were found pursuing their further studies in various institutions along with job. The figure below shows the details related to the graduates of Faculty of Science:

Figure 4: Composition of graduates in science



Graduates status summary :

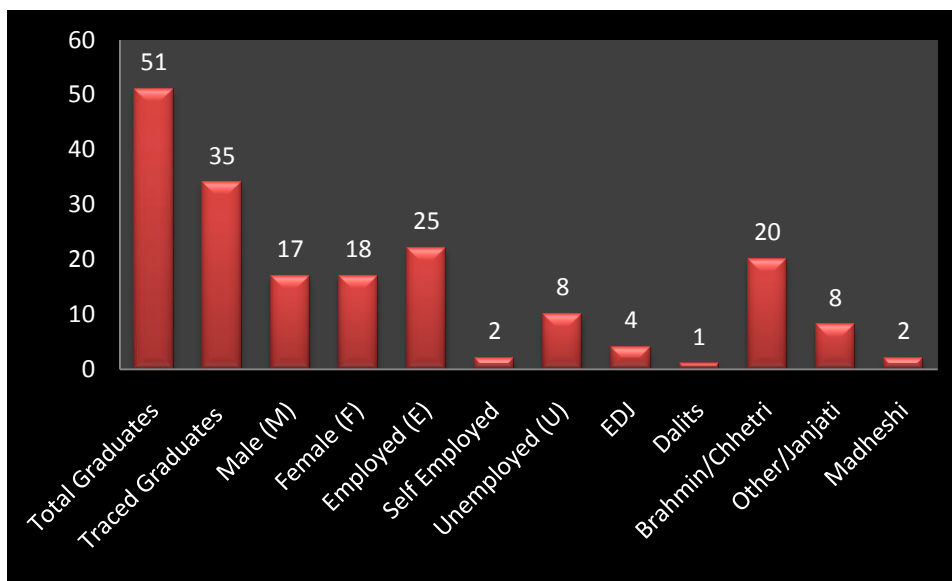
Number of students enrolled in Master Degree in various Institutions :

-
- Total Graduates : 42
 - Traced Graduates : 39
 - Untraced : 3
 - Employed (Without Studies) :9
 - Further study (Without Employed) :20
 - Employed + Further Studies : 0
 - Unemployed : 9
 - Male : 26
 - Female : 13
 - EDJ : 3
 - Dalit : 1
- Amrit Science Campus=3
 - Collage of Aplide Science=1
 - Trichandra Multiple Cmapus = 2
 - Patan Multiple Campus =6
 - TU Central Campus = 7
 - Golden Gate Campus = 1

2.8.5 Faculty of Management (Master's Degree)

Among the 51 graduates of Faculty of Management (MBS), only 35 of them could be approached, 16 graduates could not be contacted by any means. Out of 35 reached out graduates, 17 were males. The female graduates were 18 and EDJs 4 and Dalits 1. Among the 25 employed graduates, 6 were working in the field of teaching. 19 graduates were working as assistant, Accountant, Branch Manager and Supervisor level employees in private and government sectors.

Figure 5: Composition of graduates in MBS (Master)



Graduates status summary :

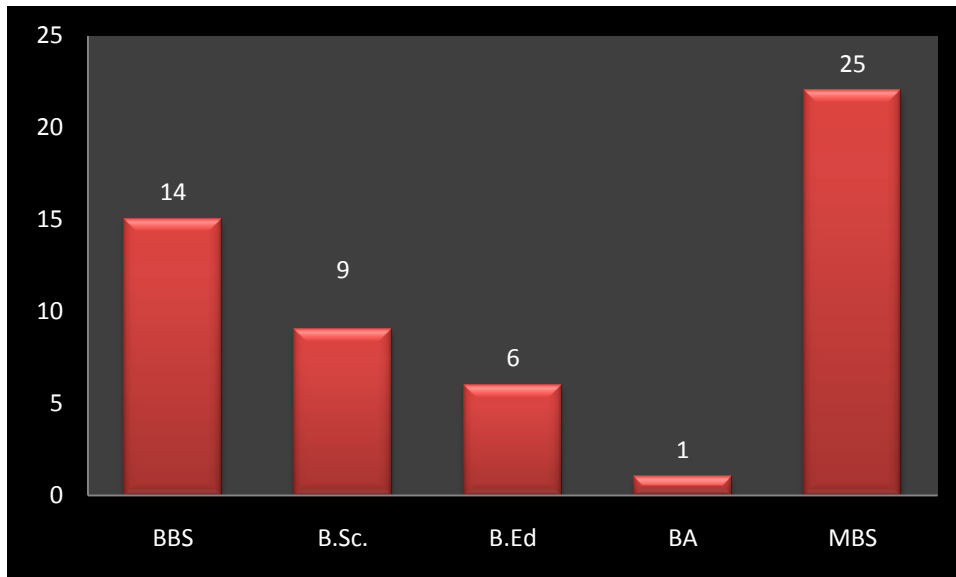
Number of students enrolled in Master Degree in various Institutions :

- Total Graduates : 51
- Traced Graduates : 35
- Untraced : 16
- Employed :25
- Unemployed : 8
- Male : 17
- Female : 18
- Self Employed : 2

No Further Study

2.8.7. Faculty- wise Employment composition of graduates

Figure 7: Faculty- wise employment composition of graduates

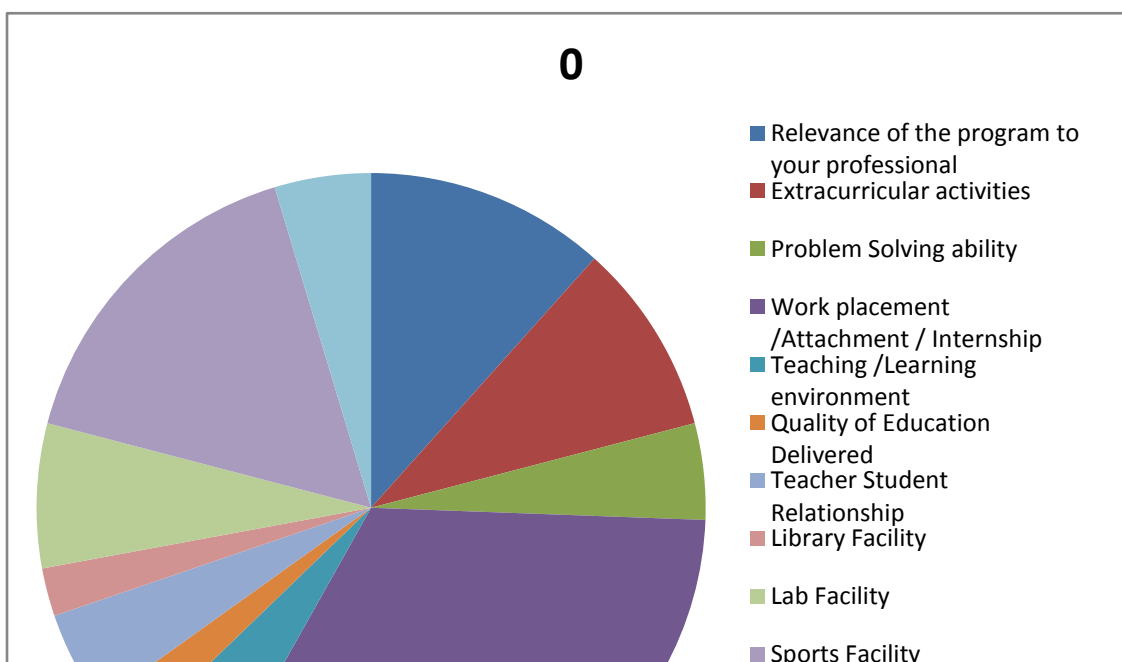


2.9. Issues Related to Quality and Relevance of Program:

Table 7: Strengths and weaknesses of campus and campus programs, tracer study, 2017

	0	1	2	3	4	5	Total
Relevance of the program to your professional	5	14	27	47	18	36	144
Extracurricular activities	4	10	24	52	34	23	147
Problem Solving ability	2	8	29	38	34	26	147
Work placement /Attachment / Internship	14	12	22	33	33	33	147
Teaching /Learning environment	2	4	15	38	42	43	147
Quality of Education Delivered	1	9	13	39	42	43	147
Teacher Student Relationship	2	3	13	23	41	65	147
Library Facility	1	3	11	30	34	68	147
Lab Facility	3	11	18	26	32	57	147
Sports Facility	7	15	16	27	38	44	147
Canteen / Urinals etc	2	16	28	26	45	30	147

Figure 8 : Strengths and weaknesses of campus and campus program.



The tracer study has been found one of the best tools to evaluate and identify the strengths and weaknesses of an institution, learning-teaching activities, and its programs. In course of study, the team asked them some questions related to relevance of the courses for the professional requirements. The highest number of correspondents pointed out that the learning-teaching environment was excellent (29.25%). They enjoyed much freedom which gave them the sense of self-responsibility. They participated in extra-curricular activities actively for their all-round developments. Likewise, they also said that the teacher-student relationship was excellent (44.21%). They found their teachers open, friendly, and very helpful, while some respondents said that it was very good (27.89%). During the interactions with them, they answered that the quality of delivery was excellent (29.25%). Its quality has enhanced as a result of new techniques and multi-media technology. The participants considered the relevance of its programs for their professional requirements (31.97%), and problem solving skills (25.85%) good. And (29.94%) of them said it was very good.

The following tables represent major strengths and weaknesses of the institutional programs. On the basis of the given categories, the quality and relevance of programs have been studied that reflect the strengths, weaknesses, its rating regarding the educational programs, contributions in their academic and personal enhancement. The rating values ranged from 0 to 5 on given particulars:

2.10. Effectiveness of Extracurricular activities

Table 9: Extracurricular activities

Extracurricular activities							
Program	Very Weaker	Weaker	Weak	Good	Better	Excellent	Total
BBS	2	3	10	19	13	9	56
BA	0	0	1	3	0	0	4
B.Ed.	0	1	2	7	2	2	14
B.Sc.	0	6	6	11	9	6	38
MBS	2	0	5	12	10	6	35
Total	4	10	24	52	34	23	147

The team also attempted to find out the graduates' various experiences at DMC. They responded that they had a grand time at DMC. They enjoyed extra-curricular and other academic activities

very much. 15.64% of respondents said that it was excellent while 23.12% of them replied that it was good.

2.11. Effectiveness on Problem solving skill

Table 9: Problem Solving Skill

Problem solving skill							
Program	Very Weaker	Weaker	Weak	Good	Better	Excellent	Total
BBS	1	2	7	17	19	10	56
BA	0	0	3	0	1	0	4
B.Ed.	0	0	4	4	4	2	17
B.Sc.	0	5	10	7	11	5	38
MBS	1	1	5	10	9	9	35
Total	2	8	29	38	44	26	147

2.12. Effectiveness on Work placement/attachment/Internship

Table 10: Work placement/attachment/Internship

Work placement/attachment/ Internship							
Program	Very Weaker	Weaker	Weak	Good	Better	Excellent	Total
BBS	2	6	7	16	8	17	56
BA	0	0	0	3	0	1	4
B.Ed.	2	0	2	1	6	3	17
B.Sc.	9	3	7	6	9	4	38
MBS	1	3	6	7	10	8	35
Total	14	12	22	33	33	33	147

2.13. Teaching - Learning Environment:

The study also attempted to find out the views of graduates regarding their study experiences at DMC and its strengths and weaknesses in terms of teaching /learning environment offered by the institution. 31.97 % of the respondents replied that it was excellent, 38.09% of the respondents replied better, 45.57% of the respondents replied good, 46.25% of the respondent replied weak, 46.25% of the respondents weaker, 23.12% of the respondents replied very week. The quality of the education delivered was good enough to meet the requirements of job markets:

Table 12: Teaching learning environment

Teaching - learning environment							
Program	Very Weaker	Weaker	Weak	Good	Better	Excellent	Total
BBS	0	2	9	17	10	18	56
BA	0	0	0	1	2	1	4
B.Ed.	2	1	1	3	3	4	17
B.Sc.	0	1	4	8	18	7	38
MBS	0	0	1	9	12	13	35
Total	34	68	68	67	59	47	147

2.14. Teacher - Student Relationship

The study also attempted to find out the views of graduates regarding their study experiences at DMC, and the strength and weakness in terms of student- teacher relationship. The study team asked the graduates regarding the teacher-student relationships at DMC. 44.21% of the respondents replied that the student-teacher relationship was excellent, 27.89% of the respondents replied better, 15.64% of the respondents replied well, 8.84% of the respondents replied weak, 2.04% of the respondents replied weaker and 1.36% of the respondents replied that the student teacher relationship was very weaker:

Table 13: Teacher student relationship

Teacher- student relationship							
Program	Very Weaker	Weaker	Weak	Good	Better	Excellent	Total
BBS	0	0	3	10	17	26	56

BA	0	0	1	2	1	0	4
B.Ed.	1	2	2	2	2	5	17
B.Sc.	1	1	6	4	9	17	38
MBS	0	0	1	5	12	17	35
Total	2	3	13	23	41	65	147

2.15. Quality of Education Delivery

The graduates were queried regarding the quality of education offered to them under various streams. Among the respondents, 26.53 % of them replied that the quality of the education offered to them is excellent, 27.89% respondents replied better, 26.53 % respondents replied good, 8.84% respondents replied weak, 6.122% respondents replied weaker, and 4.08 % respondents replied very weaker. The overall quality delivery at Damak Multiple Campus was good enough to meet the requirements of expanding job markets.

Table 14: Education delivery efficiency

Education delivery efficiency							
Program	Very Weaker	Weaker	Weak	Good	Better	Excellent	Total
BBS	5	2	5	19	10	15	56
BA	0	0	1	3	0	0	4
B.Ed.	1	2	2	2	3	4	14
B.Sc.	0	5	3	7	13	10	38
MBS	0	0	2	8	15	10	35
Total	6	9	13	39	41	39	147

2.16. Library Facility:

The study team asked the graduates to give their views on strengths and weaknesses of the institution in terms its library services. 46.25% of the respondents replied that it was excellent, 23.12% of the respondents replied better, 20.40% of the respondent replied good / well, 7.48% of the respondents replied weak, 2.04% of the respondents replied weaker, 0.68% of the respondents replied very weaker. All the details regarding the strengths and weaknesses of the institution in terms its library services are given below:

Table 15: Library facility

Library facility							
Program	Very Weaker	Weaker	Weak	Good	Better	Excellent	Total
BBS	0	1	4	14	9	28	56
BA	0	0	1	0	1	2	4
B.Ed.	1	2	0	0	4	7	14
B.Sc.	0	0	2	7	13	16	38

MBS	0	0	4	9	7	15	35
Total	1	3	11	30	34	68	147

2.17. Laboratory Facility

The graduates were asked to tell the team about the institution in terms its lab services. 38.77% of the respondents replied that it was excellent, 21.76% of the respondents replied better, 17.68% of the respondents replied well, 12.24% of the respondents replied weak, and 7.48% of the respondents replied weaker. While only 2.04% of the respondents replied very weaker in terms of lab services and facilities available in the campus. The campus has provided a computer lab with capacity of 35 computers to BCA, BBA, BSW, and Education Faculty. The details of lab services are given in the table given below:

Table 16: Laboratory facility

Laboratory facility							
Program	Very Weaker	Weaker	Weak	Good	Better	Excellent	Total
BBS	0	5	10	7	12	22	56
BA	0	0	1	0	0	3	4
B.Ed.	1	2	0	3	4	4	14
B.Sc.	1	4	2	5	9	17	38
MBS	1	0	5	11	7	11	35
Total	3	11	18	26	32	57	147

2.18. Canteen and Urinals Facility

The tracer study team made some queries to the graduates regarding their views on strengths and weaknesses of the institution in terms its canteen and urinal facilities. Among the respondents, 2040% of them replied that it was excellent, 3061% of the respondents replied better, 17.68% of the respondents replied good / well, 19.04% of the respondents replied weak, 1088% of the respondents replied weaker, and 1.36% of them replied very weaker in terms of canteen services and urinal facilities. The table below shows the strengths and weaknesses of the institution in terms its canteen and urinal services:

Table 17: Canteen facility

Canteen facility							
Program	Very Weaker	Weaker	Weak	Good	Better	Excellent	Total
BBS	0	5	13	6	21	11	56
BA	0	0	1	1	0	2	4
B.Ed.	0	3	0	4	5	2	14
B.Sc.	2	6	8	6	6	10	38

MBS	0	2	6	9	13	5	35
Total	2	16	28	26	45	30	147

2.19. Sports Facility

The graduates also responded to the study team in terms its sports services. Of the total respondents, 29.93% of them replied that it is excellent, 25.85% of the respondents replied better, 18.36% of the respondents replied good, 10.88% of the respondents replied weak, 10.20% of the respondent replied weaker, and 4.76% of them replied very weaker. The team has presented the details regarding the strengths and weaknesses of the institution in terms its sports services. It has been given in the table below:

Table 18: Sports facility

Sports facility							
Program	Very Weaker	Weaker	Weak	Good	Better	Excellent	Total
BBS	1	7	7	10	16	15	56
BA	0	0	1	1	0	2	4
B.Ed.	2	1	1	2	3	5	14
B.Sc.	4	6	2	6	7	13	38
MBS	0	1	5	8	12	9	35
Total	7	15	16	27	38	44	147

CHAPTER: THREE

MAJOR FINDINGS OF THE STUDY:

3.1 Employment Status of the Graduates:

This section presents the summary of the findings made during the study of all the students of graduate and postgraduate levels. The total number of graduates for the study was 147 in 2018AD. The study found that 55 students were involved in services, 03 self-employed graduates. Of the total number of the graduates, 44(80%) graduates were involved in private sectors and 5 graduates (9.43%) were in the public sectors. It was found that while 6 of them (11.32%) were in the government services.

Of the total employed graduates, 52 were full -time employees and 3 of them were part-time employees. The number of graduates who were in teaching profession was 21(Male13-Female08), 29 graduates were employed as assistants (Male 16-Female13). 5 graduates (9.43%) were Supervisor / Branch Manager level employees (Male 3- Female 2). And 3 graduates were self – employed.

The study also discovered that 35 students (23.80%) were unemployed. Among the total unemployed students, there were 18 males and 17 females. Out of 147 students, 54 were involved in further studies only and 8 were employed and were also pursuing further studies.

3.2 Issues Related to the Quality and Relevance of Programs:

The respondents considered the quality of delivery at DMC excellent. Its academic quality has enhanced as a result of new methods and techniques, use of technology and others. The participants considered the relevance of its programs for their professional requirements, and problem solving skills good. They gained academic knowledge along with various skills for solving problems at work places, research skills, and importance of team spirit. Some graduates said that despite gaining knowledge and other skills, there communicative skills were not satisfactory.

In this study, the team found that most of the graduates of bachelor level were desirous to pursue further studies, whereas the graduates of master's degree prioritized to establish their career. Most of the graduates were involved in the private sectors. It shows that the graduates needed better orientations and counseling so that they could critically analyze the career opportunities. The students involved in private and public sectors expect government services if they get opportunities. The graduates from B.A. and B.Ed. programs were found involved mostly in teaching sectors, whereas the students from B.B.S. and M.B.S. were involved in co-operatives and banking sectors. The graduates of science program were employed at hospitals, teaching, and science laboratories. The respondents suggested that the campus should also focus on

organizing training courses and promoting field works as well. Further, a huge number of students who were looking for jobs emphasized on practical, job-oriented, and skills developing courses rather than theoretical.

3.3 Implications to Institutional Reform:

The tracer study reflects that DMC should make efforts for the all-round developments of its graduates. The campus should upgrade library facilities and effective delivery of services. The campus should give an emphasis on extra-curricular activities, communicative skills and pedagogical reforms, practical and research-based courses. It should promote learning-teaching strategies and technologies. Likewise, DMC should identify the students' needs and interests which include upgrading various facilities of games and sports, restrooms, common-rooms, canteen, and urinals etc.

3.4 Conclusion and Recommendations:

Damak Multiple Campus has a long history of its contributions in the academic field in the eastern region of Nepal. It has been fulfilling the requirements of competent human resources in various sectors. With the help of its various programs and activities, DMC has developed connections with its stakeholders. It is moving steadily towards achieving a broader goal: transforming education, transforming society. The findings of this study reflect activities that are prioritized at DMC. It has been successful in building a strong foundation of beliefs in the heart and soul of its graduates. The higher range of positive responses of the graduates regarding academic activities and other aspects clearly reflect its image.

The comparative study of programs is helpful to make further changes, institutional plans, and finding important remedies. The study also shows the need of improving some aspects of DMC. These include promoting its academic environment, more relevant and job-oriented courses and programs for meaningful learning, enhancing and promoting its academic quality so that its graduates could meet the requirements of job markets, and address the challenges that appear in later days in their work places. It would help them find lucrative job opportunities; understand the needs and requirements of national and international job markets.

Thank You

ANNEX

ANNEX-1:GRADUATE VERIFICATIONDOCUMENTS
Campus Name: Damak Multiple Campus
GRADUATE LIST FOR BACHELOR LEVEL/ GRADUATE IN THE YEAR 2018
Status:E=Employed, U=Unemployed,S= Studying,O= Out of reach

S.n	Name of Graduates	Level	Program	TU Registration Number	Graduated/ Level Crossed Year	Employment Status	Sex	EDJ	Dalit
1	AAZAD ANSARI	Bachelor's	BBS	7-2-202-0001-2014	2018	E	M	*	
2	ALIZA SITAULA	Bachelor's	BBS	7-2-202-0015-2014	2018	O	F		
3	ANJANA CHAMLAGAIN	Bachelor's	BBS	7-2-202-0090-2013	2018	FS	F		
4	ANU SHAH	Bachelor's	BBS	7-2-202-13-2012	2018	FS	F		
5	APSHARA RAI	Bachelor's	BBS	7-2-202-0010-2014	2018	FS	F		
6	ARJUN NEUPANE	Bachelor's	BBS	7-2-0202-0381-2014	2018	E&FS	M		
7	ARUNA THAPA	Bachelor's	BBS	7-2-202-19-2012	2018	U	F		
8	BANDANA NEUPANE	Bachelor's	BBS	7-2-202-0120-2013	2018	O	F		
9	BHAWANA NEUPANE	Bachelor's	BBS	7-2-202-0115-2013	2018	O	F		
10	BHUMIKA DHAKAL	Bachelor's	BBS	7-2-202-0119-2013	2018	O	F		
11	BIDHYA SUNUWAR	Bachelor's	BBS	7-2-202-0020-2014	2018	E&FS	F	*	*
12	BIJAYA RAI	Bachelor's	BBS	7-2-202-0019-2014	2018	FS	M		
13	BIJITA KHANAL	Bachelor's	BBS	7-2-202-0029-2014	2018	FS	F		
14	BIKRAM SHRESTHA	Bachelor's	BBS	7-2-202-0021-2014	2018	FS	M		
15	BINDU TIMSHINA	Bachelor's	BBS	7-2-202-0114-2013	2018	O	F		
16	DEEPA BHATTARAI	Bachelor's	BBS	7-2-202-0045-2014	2018	FS	F		
17	DURGA BAHDUR BASNET	Bachelor's	BBS	7-2-202-0046-2014	2018	E	M		

18	ELISHA RAI	Bachelor's	BBS	7-2-202-0057-2014	2018	FS	F		
19	ISHWOR KAFLE	Bachelor's	BBS	7-2-202-0059-2014	2018	FS	M		
20	JENISH KHADKA	Bachelor's	BBS	7-2-202-0061-2014	2018	U	M		
21	JIVAN DHUNGEL	Bachelor's	BBS	7-2-202-0159-2013	2018	S	M		
22	KABITA BHATTARAI	Bachelor's	BBS	7-2-202-0064-2014	2018	FS	F		
23	KAJINSARA KARKI	Bachelor's	BBS	7-2-202-86-2010	2018	E	F		
24	KAMALA KARKI	Bachelor's	BBS	7-2-202-382-2011	2018	E	F		
25	KAUSHAL GHIMIRE	Bachelor's	BBS	7-2-202-0069-2014	2018	O	M		
26	KUBER DHAKAL	Bachelor's	BBS	7-2-202-0067-2014	2018	E&FS	M		
27	LILA GAUTAM	Bachelor's	BBS	7-2-202-0080-2014	2018	FS	F		
28	LILA SITAULA	Bachelor's	BBS	7-2-202-0180-2013	2018	O	F		
29	MANIKA THEBE	Bachelor's	BBS	7-2-202-0085-2014	2018	O	F		
30	MANISH DAHAL	Bachelor's	BBS	7-2-202-0087-2014	2018	O	M		
31	MANISH SHRESTHA	Bachelor's	BBS	7-2-202-143-2012	2018	U	M		
32	MANISHA MAGAR	Bachelor's	BBS	7-2-202-0090-2014	2018	U	F		
33	MANISHA THAPA	Bachelor's	BBS	7-2-202-0088-2014	2018	FS	F		
34	MILAN KUMAR KADARIYA	Bachelor's	BBS	7-2-202-0187-2013	2018	FS	M		
35	MIRINA THEBE	Bachelor's	BBS	7-2-202-139-2012	2018	E	F		
36	MUNA KHANAL	Bachelor's	BBS	7-2-202-0083-2014	2018	FS	F		
37	MUNA SHRESTHA	Bachelor's	BBS	7-2-202-0086-2014	2018	FS	F		
38	NIKESH THAPA	Bachelor's	BBS	7-2-202-0102-2014	2018	E&FS	M		
39	NIRAJ SHRESTHA	Bachelor's	BBS	7-2-202-0103-2014	2018	O	M		
40	OMNATH ADHIKARI	Bachelor's	BBS	7-2-202-0113-2014	2018	FS	M		
41	PRAKASH LIMBU	Bachelor's	BBS	7-2-202-0130-2014	2018	FS	M		
42	PRAMILA NEUPANE	Bachelor's	BBS	7-2-202-0119-2014	2018	E&FS	F		
43	PREMA TAMANG	Bachelor's	BBS	7-2-202-0116-2014	2018	FS	F	*	
44	RABINA RAI	Bachelor's	BBS	7-2-202-194-2012	2018	U	F		
45	RAJ POUDEL	Bachelor's	BBS	7-2-202-0149-2014	2018	FS	M		

46	RAJAN THAPA	Bachelor's	BBS	7-2-202-0147-2014	2018	O	M		
47	RAM KUMAR BHUJAL	Bachelor's	BBS		2018	O	M		
48	RANJANA KHANAL	Bachelor's	BBS	7-2-202-0137-2014	2018	E&FS	F		
49	RANJIT KUMAR RAYA	Bachelor's	BBS	7-2-202-181-2012	2018	U	M		
50	RANJU KUMAL	Bachelor's	BBS	7-2-202-0133-2014	2018	FS	F	*	*
51	RENUKA BASKOTA	Bachelor's	BBS	7-2-202-153-2010	2018	U	F		
52	ROHIT KUMAR SINGH RAY	Bachelor's	BBS	7-2-202-0135-2014	2018	O	M		
53	RUBI THAPA MAGAR	Bachelor's	BBS	7-2-202-0141-2014	2018	FS	F		
54	SABNAM IWARAM THEBE	Bachelor's	BBS	7-2-202-278-2012	2018	U	M		
55	SAGAR RAI	Bachelor's	BBS	7-2-202-0168-2014	2018	O	M		
56	SAMIR BHATTARAI	Bachelor's	BBS	7-2-202-0195-2014	2018	E	M		
57	SAMJHANA KERUNG	Bachelor's	BBS	7-2-202-0181-2014	2018	FS	F		
58	SANAM RAI	Bachelor's	BBS	7-2-0202-0490- 2017	2018	U	F		
59	SANGITA THAPA	Bachelor's	BBS	7-2-202-0164-2014	2018	O	F		
60	SANJIT LAWATI	Bachelor's	BBS	7-2-202-0154-2014	2018	FS	M	*	*
61	SANJOG KHATIWADA	Bachelor's	BBS	7-2-202-0159-2014	2018	U	M		
62	SAPANA LIMBU	Bachelor's	BBS	7-2-202-0151-2014	2018	FS	F		
63	SARISMA BHANDARI	Bachelor's	BBS	7-2-202-0279-2013	2018	E&FS	F		
64	SATYAM KHANAL	Bachelor's	BBS	7-2-202-0170-2014	2018	FS	M		
65	SHANTA BASTOLA	Bachelor's	BBS	7-2-202-0158-2014	2018	FS	F		
66	SHOVA TIMSHINA	Bachelor's	BBS	7-2-202-0167-2014	2018	FS	F		
67	SIRJANA TIMSINA	Bachelor's	BBS		2018	O	F		
68	SRIJANA ADHIKARI	Bachelor's	BBS	7-2-202-0288-2013	2018	O	F		
69	SUDIKEYA PAUDEL	Bachelor's	BBS	7-2-202-0274-2013	2018	O	F		

70	SUJAN TAMANG	Bachelor's	BBS	7-2-202-0171-2014	2018	FS	M	*	
71	SUNITA ACHARYA	Bachelor's	BBS	7-2-202-0166-2014	2018	FS	F		
72	SUNITA SHRESTHA	Bachelor's	BBS	7-2-202-629-2018	2018	O	F		
73	SUSHMITA LIMBU	Bachelor's	BBS	7-2-202-0209-2014	2018	O	F		
74	SUSMA ADHIKARI	Bachelor's	BBS	7-2-202-0264-2013	2018	O	F		
75	SUSMITA PRASAI	Bachelor's	BBS	7-2-202-0270-2013	2018	E	F		
76	YOGESH MAGAR	Bachelor's	BBS	7-2-202-0219-2014	2018	E&FS	M		
77	YUBARAJ RAI	Bachelor's	BBS	7-2-202-0217-2014	2018	FS	M		
78	AASHIS SAPKOTA	Bachelor's	B.SC.	5-2-202-289-2014	2018	E	M		
79	ANIL ACHERYA	Bachelor's	B.SC.	5-2-202-290-2014	2018	FS	M		
80	ARUN RAI	Bachelor's	B.SC.	5-2-0202-0293-2014	2018	U	M		
81	BABITA KOIRALA	Bachelor's	B.SC.	5-2-0202-0296-2014	2018	FS	F		
82	BIBEK ADHIKARI	Bachelor's	B.SC.	5-2-0202-0303-2014	2018	E	M		
83	BIJAYEETA TALIPA	Bachelor's	B.SC.	5-2-0202-0302-2014	2018	FS	F	*	*
84	BIKASH NIROULA	Bachelor's	B.SC.	5-2-0202-0299-2014	2018	FS	M		
85	BINOD BASENT	Bachelor's	B.SC.	5-2-0202-0294-2014	2018	FS	M		
86	BISHESH MUKARUNG RAI	Bachelor's	B.SC.	5-2-0202-0301-2014	2018	FS	M		
87	DEWARAJ BASTOLA	Bachelor's	B.SC.	5-2-0202-0018-2013	2018	E	M		
88	DHANRAJ LAWATI	Bachelor's	B.SC.	5-2-0202-0307-2014	2018	FS	M	*	*
89	DILIP DHIMAL	Bachelor's	B.SC.	5-2-0202-0305-2014	2018	U	M	*	
90	JIJAN KARKI	Bachelor's	B.SC.	5-2-0202-0310-	2018	O	M		

				2014					
91	KALPANA THAPA	Bachelor's	B.SC.	5-2-0202-0315-2014	2018	FS	F		
92	KIRAN NEPAL	Bachelor's	B.SC.	5-2-0202-0027-2013	2018	FS	M		
93	KUMAR DHAMALA	Bachelor's	B.SC.	5-2-0202-0314-2014	2018	FS	M		
94	LOCHAN CHONGWANG LIMBU	Bachelor's	B.SC.	5-2-0202-0316-2014	2018	U	M		
95	MADAN SAPKOTA	Bachelor's	B.SC.	5-2-0202-0318-2014	2018	E	M		
96	MANILA NEUPANE	Bachelor's	B.SC.	5-2-0202-0322-2014	2018	U	F		
97	MANISH POKHREL	Bachelor's	B.SC.	5-2-0202-0320-2014	2018	FS	M		
98	MANITA KHATRI	Bachelor's	B.SC.	5-2-0202-0319-2014	2018	FS	F		
99	MANJU NEUPANE	Bachelor's	B.SC.	5-2-0202-0323-2014	2018	FS	F		
100	NABINA ACHARYA	Bachelor's	B.SC.	5-2-0202-0326-2014	2018	FS	F		
101	POSHAN SAPKOTA	Bachelor's	B.SC.	5-2-0202-0330-2014	2018	E	M		
102	PRADIP ADHIKARI	Bachelor's	B.SC.	5-2-0202-0329-2014	2018	U	M		
103	PUJAN LUITEL	Bachelor's	B.SC.	7-2-202-0232-2013	2018	O	M		
104	RABIN ANGDEMBEY	Bachelor's	B.SC.	5-2-0202-0037-2013	2018	U	M		
105	RAJ BOGATI	Bachelor's	B.SC.	5-2-0202-0339-2014	2018	FS	M	*	*
106	RANJITA GHIMIRE	Bachelor's	B.SC.	5-2-0202-0478-2010	2018	U	F		

107	ROCHAK RAI	Bachelor's	B.SC.	5-2-0202-0334-2014	2018	O	M		
108	ROHIT AGRAWAL	Bachelor's	B.SC.	5-2-0202-0335-2014	2018	E	M		
109	ROJILA GHIMIRE	Bachelor's	B.SC.	5-2-0202-0332-2014	2018	FS	F		
110	ROSHANI GHIMIRE	Bachelor's	B.SC.	5-2-0202-0333-2014	2018	FS	F		
111	SAGAR BHATTARAI	Bachelor's	B.SC.	5-2-0202-0342-2014	2018	E	M		
112	SAMIKSHYA KUNWAR	Bachelor's	B.SC.	5-2-0202-0356-2014	2018	U	F		
113	SANGAM POUDEL	Bachelor's	B.SC.	5-2-0202-0347-2014	2018	U	F		
114	SAROJ BASNET	Bachelor's	B.SC.	5-2-0202-0349-2014	2018	FS	M		
115	SAROJ BASNET	Bachelor's	B.SC.	5-2-202-349-2014	2018	FS	M		
116	SAURAV KATUWAL	Bachelor's	B.SC.	5-2-0202-0341-2014	2018	FS	M		
117	SEWAN LIMBU	Bachelor's	B.SC.	5-2-0202-0350-2014	2018	E	M		
118	SHEELA K.C.	Bachelor's	B.SC.	5-2-0202-0353-2014	2018	E	F		
119	SUBASH RAI	Bachelor's	B.SC.	5-2-0202-0355-2014	2018	FS	M		
120	BALARAM PANDEY	Bachelor's	B.ED.	9-2-202-0403-2007	2018	E	M		
121	BASANTA KHADKA	Bachelor's	E.ED.	9-2-0202-0389-2015	2018	O	F		
122	BHUGOL DEV RAI	Bachelor's	E.ED.	9-2-0202-0229-2014	2018	O	M		
123	BHUWN THULUNG RAI	Bachelor's	B.ED.	9-2-0202-0488-2012	2018	U	M		

124	BIMALA NEUPANE	Bachelor's	E.ED.	9-2-0202-0391-2015	2018	O	F		
125	BINITA BOHORA	Bachelor's	E.ED.	9-2-0202-0392-2015	2018	O	F		
126	BISHNU NEMBANG	Bachelor's	E.ED.	9-2-0202-0390-2015	2018	O	M		
127	CHHALIMAYA LIMBU	Bachelor's	B.ED.	9-2-202-237-2014	2018	FS	F		
128	DHANU RAI	Bachelor's	E.ED.	9-2-0202-0398-2015	2018	O	M		
129	DIBYASHWARI KHANAL	Bachelor's	E.ED.	9-2-0202-0397-2015	2018	O	F		
130	GITA MAGARATI	Bachelor's	E.ED.	9-2-0202-0351-2013	2018	O	F	*	*
131	KESHAB BHATTARAI	Bachelor's	E.ED.	9-2-0202-0402-2015	2018	O	M		
132	MANITA RAI	Bachelor's	E.ED.	9-2-0202-0375-2013	2018	O	F		
133	MANITA RAI	Bachelor's	E.ED.	9-2-0202-0406-2015	2018	O	F		
134	PRABINA LIMBU	Bachelor's	B.ED.	9-2-0202-0234-2011	2018	FS	F		
135	PRABRITI B.K	Bachelor's	E.ED.	9-2-0202-0371-2012	2018	O	F		
136	RAJ KUMAR LIMBU	Bachelor's	B.ED.	9-2-202-402-2013	2018	U	M		
137	RAJAN NEPALI	Bachelor's	E.ED.	9-2-0202-0269-2014	2018	O	M	*	*
138	RAMA KHATIWADA	Bachelor's	E.ED.	9-2-0202-0271-2014	2018	O	F		
139	RINA RAI	Bachelor's	B.ED.	9-2-0202-0404-2013	2018	U	F		
140	RUPA BARAL	Bachelor's	E.ED.	9-2-0202-0268-2014	2018	O	F		

141	SABINA RAI	Bachelor's	E.ED.	9-2-0202-0430-2015	2018	O	F		
142	SABITA THAPA	Bachelor's	E.ED.	9-2-0202-0428-2015	2018	O	F		
143	SANDIP THAPA	Bachelor's	B.ED.	9-2-0202-0415-2013	2018	E&FS	M		
144	SANGITA CHEMJONG	Bachelor's	E.ED.	9-2-0202-0425-2015	2018	O	F		
145	SHILA PRADHAN	Bachelor's	B.ED.	9-2-0202-0417-2013	2018	E	F		
146	SONAM MENYANGBO LIMBU	Bachelor's	B.ED.	9-2-0202-0434-2012	2018	E	M		
147	SUMINA LAWATI	Bachelor's	B.ED.	9-2-0202-0283-2011	2018	E	F	*	*
148	SUNITA RAI	Bachelor's	B.ED.	9-2-0202-0437-2013	2018	U	F		
149	MANITA RAI	Bachelor's	B.ED.	9-2-202-375-2013	2018	E	F		
150	BHOJ KUMAR TAMANG	Bachelor's	B.A.		2018	O	M	*	
151	BIKRAM SHERMA	Bachelor's	B.A.	6-2-202-112-2015	2018	FS	M	*	
152	CHANDRA PRASAD PAUDEL	Bachelor's	B.A.	7-1-202-385-2003	2018	O	M		
153	GOMA RAI	Bachelor's	B.A.	6-2-0202-0112-2015	2018	FS	F		
154	HEMANTA RAI	Bachelor's	B.A.		2018	O	M		
155	KISHAN MOHARA	Bachelor's	B.A.	6-2-0202-0365-2014	2018	E	M	*	*
156	MEKPIS LIMBU	Bachelor's	B.A.	6-2-0202-0116-2015	2018	U	M		
157	NABIN LIMBU	Bachelor's	B.A.	6-2-0202-0367-2014	2018	O	M		
158	RACHANA RAI	Bachelor's	B.A.	6-2-0202-0120-	2018	O	F		

				2015					
TOTAL								16	10

Campus Name: Damak Multiple Campus

GRADUATE LIST FOR MASTERS LEVEL/ GRADUATE IN THE YEAR 2018

Status: E=Employed, U=Unemployed, S= Studying, O= Out of reach

1	ANJANA DAHAL	Master's	MBS	7-2-736-5-2011	2018	O	F		
2	BHIMA KARKI	Master's	MBS	7-2-202-234-2007	2018	O	F		
3	BIJU ARCHARYA	Master's	MBS	7-2-202-229-2007	2018	E	F		
4	BIKASH BHANDARI	Master's	MBS	7-2-202-307-2006	2018	E	M		
5	BINITA KHANAL	Master's	MBS	7-2-202-120-2008	2018	O	F		
6	BINOD CHAPAGAIN	Master's	MBS	7-2-202-302-2011	2018	O	M		
7	CHANDRIKA RAJBANSHI	Master's	MBS	7-2-2-1019-2007	2018	O	F		
8	DAKSHINA RAI	Master's	MBS	7-2-202-347-2011	2018	U	F		
9	DIPAK KHADKA	Master's	MBS	7-2-202-457-2005	2018	O	M		
10	DIPAK SHIWAKOTI	Master's	MBS	7-1-202-459-2002	2018	O	M		
11	DIPIKA GAUTAM	Master's	MBS	7-2-899-6-2011	2018	O	F		
12	DURGA TAMANG	Master's	MBS	7-2-459-55-2004	2018	O	F		
13	GANGA DEVI SHRESTHA	Master's	MBS	7-2-735-24-2008	2018	E	F		
14	GANITA DHIMAL	Master's	MBS	7-2-735-11-2007	2018	E	F	*	
15	GENISHA SANGRAULA	Master's	MBS	7-2-202-78-2012	2018	E	F		
16	HEMA SHERMA	Master's	MBS	7-2-560-5-2009	2018	U	F	*	
17	HIRA SHRESTHA	Master's	MBS	7-2-202-0461-2010	2018	O	F		
18	ISHWARI PRASAD BHATTARAI	Master's	MBS	7-2-504-70-2006	2018	O	M		
19	JAMUNA DEVI SHRESTHA	Master's	MBS	7-2-735-30-2008	2018	E	F		
20	KABITA GURAGAIN	Master's	MBS	7-2-504-75-2006	2018	O	F		
21	LEKHNATH OJHA	Master's	MBS	7-2-504-68-2007	2018	O	M		
22	MAHESH CHANDRA NEPAL	Master's	MBS	7-3-202-0375-2014	2018	O	M		
23	MANISHA POUDEL	Master's	MBS	7-2-730-24-2010	2018	O	F		

24	MANJU BASNET	Master's	MBS	7-2-215-74-2005	2018	O	F		
25	MUKESH SHRESTHA	Master's	MBS	7-1-202-145-2004	2018	E	M		
26	NAMRATA BASNET	Master's	MBS	7-2-504-80-2007	2018	O	F		
27	NIRMA BISTA	Master's	MBS	7-2-202-217-2009	2018	O	F		
28	OJASBI BASNET	Master's	MBS	7-2-504-0133-2011	2018	O	F		
29	PINKI KANDAGWA	Master's	MBS	7-2-202-234-2009	2018	O	F		
30	PRIYANKA ATAL	Master's	MBS	7-2-736-0120-2010	2018	O	F		
31	PUJAN BHANDARI	Master's	MBS	7-2-504-134-2006	2018	E	M		
32	RAM BABADUR KARKI	Master's	MBS	7-2-426-33-2007	2018	E	M		
33	RASHMI ADHIKARI	Master's	MBS	7-2-504-0177-2010	2018	O	F		
34	ROSHIS BUDHATHOKI	Master's	MBS	7-2-355-33-2010	2018	E	M		
35	SANJIB MADAIYA	Master's	MBS	7-2-736-0075-2010	2018	E	M	*	
36	SANTOSH BUJGAIN	Master's	MBS	7-2-504-152-2011	2018	E	M		
37	SHAMBHU BISHWAKARMA	Master's	MBS	7-2-215-86-2005	2018	E	M	*	*
38	SHANTIRAM KHANAL	Master's	MBS	7-2-736-29-2008	2018	E	M		
39	SHARMILA POUDEL	Master's	MBS	7-2-736-0079-2010	2018	O	F		
40	SHARMILA SITOULA	Master's	MBS	7-2-736-0079-2010	2018	E	F		
41	SHOVA BHATTARAI	Master's	MBS	7-2-215-46-2003	2018	E	F		
42	SHYAM BABU SHAH	Master's	MBS	7-2-202-272-2009	2018	S	M		
43	SITA RIJAL	Master's	MBS	7-2-467-109-2011	2018	O	F		
44	SRIJANA TIMSINA	Master's	MBS	7-2-518-276-2011	2018	O	F		
45	SUJATA DHAKAL	Master's	MBS	7-1-202-219-2004	2018	O	F		
46	SUNITA SHRESTHA	Master's	MBS	7-2-627-0123-2011	2018	U	F		
47	SURYA KUMAR LIMBU	Master's	MBS	7-2-202-289-2007	2018	O	M		
48	TEJ PRASAD ADHAKARI	Master's	MBS	7-2-504-185-2009	2018	E	M		
49	TIL MAYA TAMANG	Master's	MBS	7-1-202-258-2004	2018	O	F		
50	UMA DEVI BHATTARAI	Master's	MBS	7-2-202-0536-2011	2018	E	F		
51	USHA ADHIKARI	Master's	MBS	7-2-736-102-2010	2018	O	F		

52	YAMNATH ADHIKARI	Master's	MBS	7-1-202-935-99	2018	O	M		
53	YAMUNA BHATTARAI	Master's	MBS	5-2-358-33-2005	2018	U	F		
TOTAL								4	1

ANNEX-2:Tracer Study Student Name List
Campus Name: Damak Multiple Campus
TRACRED LIST FOR BACHELOR LEVEL/ GRADUATE IN THE YEAR 2018

SN	NAME OF STUDENT	Sex	Brahmin/Chettrai	Janajati/other	Madhlsi	EDJ	Dalit	Stutas	Program
1	AAZAD ANSARI	M				*		E	BBS
2	ANJANA CHAMLAGAIN	F	*					FS	BBS
3	ANU SHAH	F			*			FS	BBS
4	APSHARA RAI	F		*				FS	BBS
5	ARJUN NEUPANE	M	*					E&FS	BBS
6	ARUNA THAPA	F	*					U	BBS
7	BIDHYA SUNUWAR	F				*	*	E&FS	BBS
8	BIJAYA RAI	M		*				FS	BBS
9	BIJITA KHANAL	F	*					FS	BBS
10	BIKRAM SHRESTHA	M		*				FS	BBS
11	DEEPA BHATTARAI	F	*					FS	BBS
12	DURGA BAHDUR BASNET	M	*					E	BBS
13	ELISHA RAI	F		*				FS	BBS
14	ISHWOR KAFLE	M	*					FS	BBS
15	JENISH KHADKA	M	*					U	BBS
16	JIVAN DHUNGEL	M	*					S	BBS
17	KABITA BHATTARAI	F	*					FS	BBS
18	KAJINSARA KARKI	F	*					E	BBS
19	KAMALA KARKI	F	*					E	BBS
20	KUBER DHAKAL	M	*					E&FS	BBS
21	LILA GAUTAM	F	*					FS	BBS
22	MANIKA THEBE	F		*				U	BBS
23	MANISH SHRESTHA	M		*				U	BBS

24	MANISHA MAGAR	F		*				U	BBS
25	MANISHA THAPA	F	*					FS	BBS
26	MILAN KUMAR KADARIYA	M	*					FS	BBS
27	MIRINA THEBE	F		*				E	BBS
28	MUNA KHANAL	F	*					FS	BBS
29	MUNA SHRESTHA	F		*				FS	BBS
30	NIKESH THAPA	M	*					E&FS	BBS
31	OMNATH ADHIKARI	M	*					FS	BBS
32	PRAKASH LIMBU	M		*				FS	BBS
33	PRAMILA NEUPANE	F	*					E&FS	BBS
34	PREMA TAMANG	F				*		FS	BBS
35	RABINA RAI	F		*				U	BBS
36	RAJ POUDEL	M	*					FS	BBS
37	RAJAN THAPA	F	*					U	BBS
38	RANJANA KHANAL	F	*					E&FS	BBS
39	RANJIT KUMAR RAYA	M		*				U	BBS
40	RANJU KUMAL	F				*		FS	BBS
41	RENUKA BASKOTA	F	*					U	BBS
42	RUBI THAPA MAGAR	F		*				FS	BBS
43	SABNAM IWARAM THEBE	M		*				U	BBS
44	SAMIR BHATTARAI	M	*					E	BBS
45	SAMJHANA KERUNG	F		*				FS	BBS
46	SANJIT LAWATI	M		*				FS	BBS
47	SANJOG KHATIWADA	M	*					U	BBS
48	SAPANA LIMBU	F		*				FS	BBS
49	SATYAM KHANAL	M	*					FS	BBS
50	SHANTA BASTOLA	F	*					FS	BBS
51	SHOVA TIMSHINA	F	*					FS	BBS
52	SUJAN TAMANG	M				*		FS	BBS
53	SUNITA ACHARYA	F	*					FS	BBS
54	SUSMITA PRASAI	F	*					E	BBS
55	YOGESH MAGAR	M		*				E&FS	BBS
56	YUBARAJ RAI	M		*				FS	BBS
57	AASHIS SAPKOTA	M	*					E	B.SC.
58	ANIL ACHERYA	M	*					FS	B.SC.

59	ARUN RAI	M		*				U	B.SC.
60	BABITA KOIRALA	F	*					FS	B.SC.
61	BIBEK ADHIKARI	M	*					E	B.SC.
62	BIJAYEETA TALIPA	F				*	*	FS	B.SC.
63	BIKASH NIROULA	M	*					FS	B.SC.
64	BINOD BASENT	M	*					FS	B.SC.
65	BISHESH MUKARUNG RAI	M		*				FS	B.SC.
66	DEWARAJ BASTOLA	M	*					E	B.SC.
67	DHANRAJ LAWATI	M		*				FS	B.SC.
68	DILIP DHIMAL	M				*		U	B.SC.
69	JIJAN KARKI	M	*					U	B.SC.
70	KALPANA THAPA	F	*					FS	B.SC.
71	KIRAN NEPAL	M	*					FS	B.SC.
72	KUMAR DHAMALA	M	*					FS	B.SC.
73	LOCHAN CHONGWANG LIMBU	M		*				U	B.SC.
74	MADAN SAPKOTA	M	*					E	B.SC.
75	MANILA NEUPANE	F	*					U	B.SC.
76	MANISH POKHREL	M	*					FS	B.SC.
77	MANITA KHATRI	F	*					FS	B.SC.
78	MANJU NEUPANE	F	*					FS	B.SC.
79	NABINA ACHARYA	F	*					FS	B.SC.
80	POSHAN SAPKOTA	M	*					E	B.SC.
81	PRADIP ADHIKARI	M	*					U	B.SC.
82	RABIN ANGDEMBEY	M		*				U	B.SC.
83	RAJ BOGATI	M				*		FS	B.SC.
84	ROHIT AGRAWAL	M				*		E	B.SC.
85	ROJILA GHIMIRE	F	*					FS	B.SC.
86	ROSHANI GHIMIRE	F	*					FS	B.SC.
87	SAGAR BHATTARAI	M	*					E	B.SC.
88	SAMIKSHYA KUNWAR	F	*					U	B.SC.
89	SANGAM POUDEL	F	*					U	B.SC.
90	SAROJ BASNET	M	*					FS	B.SC.
91	SAURAV KATUWAL	M	*					FS	B.SC.
92	SEWAN LIMBU	M		*				E	B.SC.

93	SHEELA K.C.	F	*					E	B.SC.
94	SUBASH RAI	M		*				FS	B.SC.
95	BALARAM PANDEY	M	*					E	B.ED.
96	BHUWN THULUNG RAI	M		*				U	B.ED.
97	LAXMI DHAKAL	M	*					U	B.ED.
98	MANITA RAI	F		*				E	B.ED.
99	PRABINA LIMBU	F		*				FS	B.ED.
100	RAJ KUMAR LIMBU	M		*				U	B.ED.
101	RAJAN NEPALI	M				*	*	FS	B.ED.
102	RINA RAI	F		*				U	B.ED.
103	RUPA BARAL	F	*					U	B.ED.
104	SANDIP THAPA	M	*					E&FS	B.ED.
105	SHILA PRADHAN	F		*				E	B.ED.
106	SONAM MENYANGBO LIMBU	M		*				E	B.ED.
107	SUMINA LAWATI	F		*				E	B.ED.
108	SUNITA RAI	F		*				U	B.ED.
109	BIKRAM SHERMA	M				*		FS	B.A.
110	GOMA RAI	F		*				FS	B.A.
111	KISHAN MOHARA	M				*		E	B.A.
112	MEKPIS LIMBU	M		*				U	B.A.
113	ANJANA DAHAL	F	*					E	MBS
114	BIJU ARCHARYA	F	*					E	MBS
115	BIKASH BHANDARI	M	*					E	MBS
116	BINITA KHANAL	F	*					E	MBS
117	DAKSHINA RAI	F		*				U	MBS
118	DIPAK SHIWAKOTI	M	*					S	MBS
119	DIPIKA GAUTAM	M	*					U	MBS
120	GANGA DEVI SHRESTHA	F		*				E	MBS
121	GANITA DHIMAL	F				*		E	MBS

122	GENISHA SANGRAULA	F	*					E	MBS
123	HEMA SHERMA	F				*		U	MBS
124	HIRA SHRESTHA	F		*				U	MBS
125	JAMUNA DEVI SHRESTHA	F		*				E	MBS
126	LEKHNATH OJHA	M	*					E	MBS
127	MAHESH CHANDRA NEPAL	M	*					E	MBS
128	MUKESH SHRESTHA	M		*				E	MBS
129	PINKI KANDAGWA	F		*				U	MBS
130	PRIYANKA ATAL	F			*			E	MBS
131	PUJAN BHANDARI	M	*					E	MBS
132	RAM BABADUR KARKI	M	*					E	MBS
133	ROSHIS BUDHATHOKI	M	*					E	MBS
134	SANJIB MADAIYA	M				*		E	MBS
135	SANTOSH BUJGAIN	M	*					E	MBS
136	SHAMBHU BISHWAKARMA	M				*	*	E	MBS
137	SHANTIRAM KHANAL	M	*					E	MBS
138	SHARMILA SITOULA	F	*					E	MBS
139	SHOVA BHATTARAI	F	*					E	MBS
140	SHYAM BABU SHAH	M			*			S	MBS
141	SUJATA DHAKAL	F	*					E	MBS
142	SUNITA SHRESTHA	F		*				U	MBS
143	SURYA KUMAR LIMBU	M		*				U	MBS
144	TEJ PRASAD ADHAKARI	M	*					E	MBS
145	UMA DEVI BHATTARAI	F	*					E	MBS
146	YAMNATH ADHIKARI	M	*					E	MBS
147	YAMUNA BHATTARAI	F	*					U	MBS

Total	83	45	4	15	4	
-------	----	----	---	----	---	--

Annex : 2a Tracer Study Profile of Damak Multiple Campus Damak,Jhapa

Graduation Year: 2018

Level :Bachelor Degree

Faculty: Management

Status: E=Employed=Unemployed FS= Studying E&FS=Employed and Further Study ,

***=EDJ(Educationally Disadvantage and Janjati),D=Dalit**

SN	NAME OF STUDENT	Sex	Brahmi n/Chet trai	Adhibashi/Janajati	Madeshi	EDJ	Dalit	Status	Fucalty	Reg. No	Contact Number
1	AAZAD ANSARI	M				*		E	BBS	7-2-202-0001-2014	9814030461
2	ANJANA CHAMLAGAIN	F	*					FS	BBS	7-2-202-0090-2013	9824099511
3	ANU SHAH	F			*			FS	BBS	7-2-202-13-2012	9806009784
4	APSHARA RAI	F		*				FS	BBS	7-2-202-0010-2014	9815948430
5	ARJUN NEUPANE	M	*					E&FS	BBS	7-2-0202-0381-2014	9814955660
6	ARUNA THAPA	F	*					U	BBS	7-2-202-19-2012	9816953122
7	BIDHYA SUNUWAR	F				*		E&FS	BBS	7-2-202-0020-2014	9824998702
8	BIJAYA RAI	M		*				FS	BBS	7-2-202-0019-2014	9815910639
9	BIJITA KHANAL	F	*					FS	BBS	7-2-202-0029-2014	9815917584
10	BIKRAM SHRESTHA	M		*				FS	BBS	7-2-202-0021-2014	9817909027
11	DEEPA BHATTARAI	F	*					FS	BBS	7-2-202-0045-2014	9815099534
12	DURGA BAHDUR BASNET	M	*					E	BBS	7-2-202-0046-2014	5106979902
13	ELISHA RAI	F		*				FS	BBS	7-2-202-0057-2014	9814976244
14	ISHWOR KAFLE	M	*					FS	BBS	7-2-202-0059-2014	9816952454
15	JENISH KHADKA	M	*					U	BBS	7-2-202-0061-2014	9842622712
16	JIVAN DHUNGEL	M	*					S	BBS	7-2-202-0159-2013	9816932661
17	KABITA BHATTARAI	F	*					FS	BBS	7-2-202-0064-2014	9817053291
18	KAJINSARA KARKI	F	*					E	BBS	7-2-202-86-2010	9844603577
19	KAMALA KARKI	F	*					E	BBS	7-2-202-382-2011	9842255065
20	KUBER DHAKAL	M	*					E&FS	BBS	7-2-202-0067-2014	9817000876
21	LILA GAUTAM	F	*					FS	BBS	7-2-202-0080-2014	9815076545

22	MANISH SHRESTHA	M		*				U	BBS	7-2-202-143-2012	9816086418
23	MANISHA MAGAR	F		*				U	BBS	7-2-202-0090-2014	9817082725
24	MANISHA THAPA	F	*					FS	BBS	7-2-202-0088-2014	9815047614
25	MILAN KUMAR KADARIYA	M	*					FS	BBS	7-2-202-0187-2013	9804998226
26	MIRINA THEBE	F		*				E	BBS	7-2-202-139-2012	9825976003
27	MUNA KHANAL	F	*					FS	BBS	7-2-202-0083-2014	9814087752
28	MUNA SHRESTHA	F		*				FS	BBS	7-2-202-0086-2014	9816997298
29	NIKESH THAPA	M	*					E&FS	BBS	7-2-202-0102-2014	9816934322
30	OMNATH ADHIKARI	M	*					FS	BBS	7-2-202-0113-2014	9814069132
31	PRAKASH LIMBU	M		*				FS	BBS	7-2-202-0130-2014	9807980906
32	PRAMILA NEUPANE	F	*					E&FS	BBS	7-2-202-0119-2014	9862290890
33	PREMA TAMANG	F					*	FS	BBS	7-2-202-0116-2014	9815090686
34	RABINA RAI	F		*				U	BBS	7-2-202-194-2012	9816037939
35	RAJ POUDEL	M	*					FS	BBS	7-2-202-0149-2014	9804081108
36	RANJANA KHANAL	F	*					E&FS	BBS	7-2-202-0137-2014	9862647592
37	RANJIT KUMAR RAYA	M	*					U	BBS	7-2-202-181-2012	98815300403
38	RANJU KUMAL	F					*	FS	BBS	7-2-202-0133-2014	9824936555
39	RENUKA BASKOTA	F	*					U	BBS	7-2-202-153-2010	9842643255
40	RUBI THAPA MAGAR	F		*				FS	BBS	7-2-202-0141-2014	9817947994
41	SABNAM IWARAM THEBE	M		*				U	BBS	7-2-202-278-2012	9817996725
42	SAMIR BHATTARAI	M	*					E	BBS	7-2-202-0195-2014	9806007972
43	SAMJHANA KERUNG	F		*				FS	BBS	7-2-202-0181-2014	9814037048
44	RAJAN THAPA	F	*					U	BBS	7-2-202-147-2014	9803078909
45	SANJIT LAWATI	M		*				FS	BBS	7-2-202-0154-2014	9824043068
46	SANJOG KHATIWADA	M	*					U	BBS	7-2-202-0159-2014	9806055197
47	SAPANA LIMBU	F		*				FS	BBS	7-2-202-0151-2014	9807092099
48	MANIKA THEBE	F		*				U	BBS	7-2-202-85-2014	9806047708
49	SATYAM KHANAL	M	*					FS	BBS	7-2-202-0170-2014	9807977887
50	SHANTA BASTOLA	F	*					FS	BBS	7-2-202-0158-2014	9817007578
51	SHOVA TIMSHINA	F	*					FS	BBS	7-2-202-0167-2014	9862761764

52	SUJAN TAMANG	M				*		FS	BBS	7-2-202-0171-2014	9814094968
53	SUNITA ACHARYA	F	*					FS	BBS	7-2-202-0166-2014	9817990642
54	SUSMITA PRASAI	F	*					E	BBS	7-2-202-0270-2013	9815975298
55	YOGESH MAGAR	M		*				E&FS	BBS	7-2-202-0219-2014	9806029955
56	YUBARAJ RAI	M		*				FS	BBS	7-2-202-0217-2014	9814986464

Graduates status summary :

Total Graduates	77
Traced Graduates	56
Untraced	21
Male (M)	24
Female (F)	32
Employed (E)	7
Only Graduates Further Study (FS)	30
Employed and Furthers Studies (E&F)	7
Self Employed	1
Unemployed (U)	11
EDJ	5
Dalits	0
Brahmin/Chhetri	32
Adhibasi/Janjati	18
Madeshi	1

**Damak Multiple
Campus**

Level : Bachelor Degree Program : Management

**Only employed
Stutas (E)**

S n	Name of the Students	Institutions	Address	Types of Institution	Timi	Designation
1	AAZAD ANSARI	HIMSHIKHAR TELEVISION	DAMAK,JHAPA	PRIVATE	FULL TIME	ACCOUNTANT

		PRIVAT LIMITED				
2	DURGA BAHDUR BASNET	HOTEL	CALIFORNIA USA	PRIVATE	COOK	COOK MAN
3	SAMIR BHATTARAI	PRIME COMMERCIAL BANK LTD.	DEUMAI-1,ILAM	PRIVATE	FULL TIME	ASSISTANT
4	SUSMITA PRASAI	JIVAN BIKAS BANK LIMITED	BIRTAMODE JHAPA	PRIVATE	FULL TIME	OFFICER
5	KAJINSARA KARKI	MEGA BANK LIMITED	MAHARAJUNG, KATHMANDU	PRIVATE	FULL TIME	CUSTOMER REPRESENTATIVE OFFICER
6	MIRINA THEBE	LAXMI BANK LIMITED	MAHAYAJGANJ, KATHMANDU	PRIVATE	FULL TIME	ASSISTANT
7	KAMALA KARKI	DISTRICT ELECTION OFFICE	MYANGLUNG, TEHARTHUM	GOVERNMENT	FULL TIME	COMPUTER OPERATER

Only Further Studies(FS)

S n	Name of the Students	Campus/University	Campus Address	Program	Levels	Enrolment Year
1	ANJANA CHAMLAGAIN	DAMAK MULTIPLE CAMPUS	DAMAK-JHAPA	MBS	MASTERS	10/28/2075
2	ANU SHAH	POST GRADUATE CAMPUS	BIRATNAGAR, MORANG	MBS	MASTERS	11/08/2075
3	APSHARA RAI	TU CENTRAL CAMPUS	KRITIPUR, KATHMANDU	MBS	MASTERS	2075/11
4	BIJAYA RAI	DAMAK MULTIPLE CAMPUS	DAMAK, JHAPA	MBS	MASTERS	2075/12
5	BIJITA KHANAL	TU CENTRAL CAMPUS	KRITIPUR, KATHMANDU	MBS	MASTERS	2075/11
6	BIKRAM SHRESTHA	TU CENTRAL CAMPUS	KRITIPUR, KATHMANDU	MBS	MASTERS	2075/11

7	DEEPA BHATTARAI	DAMAK MULTIPLE CAMPUS	DAMAK,JHAPA	MBS	MASTERS	11/01/2075
8	ELISHA RAI	DAMAK MULTIPLE CAMPUS	DAMAK,JHAPA	MBS	MASTERS	11/02/2075
9	ISHWOR KAFLE	DAMAK MULTIPLE CAMPUS	DAMAK,JHAPA	MBS	MASTERS	2075/12
10	KABITA BHATTARAI	DAMAK MULTIPLE CAMPUS	DAMAK,JHAPA	MBS	MASTERS	11/01/2075
11	LILA GAUTAM	MECHI MULTIPLE CAMPUS	BHADRAPUR,JHAPA	MBS	MASTERS	2075/11
12	MANISHA THAPA	DAMAK MULTIPLE CMAPUS	DAMAK,JHAPA	MBS	MASTERS	11/03/2075
13	MILAN KUMAR KADARIYA	SHANKER DEV CAMPUS	KATHMANDU	MBS	MASTERS	2075
14	MUNA KHANAL	DAMAK MULTIPLE CMAPUS	DAMAK,JHAPA	MBS	MASTERS	11/02/2075
15	MUNA SHRESTHA	TU CENTRAL CAMPUS	KRITIPUR,KATHMANDU	MBS	MASTERS	2075/11
16	OMNATH ADHIKARI	NEPAL COMMERCE CAMPUS	MINBHAWAN, KATHMANDU	MBS	MASTERS	2075/11
17	PRAKASH LIMBU	DAMAK MULTIPLE CAMPUS	DAMAK,JHAPA	MBS	MASTERS	2075/12
18	PREMA TAMANG	DAMAK MULTIPLE CAMPUS	DAMAK,JHAPA	MBS	MASTERS	2075
19	RAJ POUDEL	SANKHER DEV CAMPUS	KAPEN,KATHMANDU	MBS	MASTERS	2075/11
20	RANJU KUMAL	TU CENTRAL CAMPUS	KRITIPUR, KATHMANDU	MBS	MASTERS	2075/11
21	RUBI THAPA MAGAR	DAMAK MULTIPLE CAMPUS	DAMAK,JHAPA	MBS	MASTERS	11/03/2075
22	SAMJHANA KERUNG	DAMAK MULTIPLE CAMPUS	DAMAK,JHAPA	MBS	MASTERS	11/03/2075
23	SANJIT LAWATI	TU CENTRAL CAMPUS	KRITIPUR, KATHMANDU	MBS	MASTER	2075/11
24	SAPANA LIMBU	DAMAK MULTIPLE CAMPUS	DAMAK,JHAPA	MBS	MASTERS	2075
25	SATYAM KHANAL	DAMAK MULTIPLE CAMPUS	DAMAK,JHAPA	MBS	MASTERS	2075/12

26	SHANTA BASTOLA	TU CENTRAL CAMPUS	KRITIPUR, KATHMANDU	MBS	MASTERS	2075/11
27	SHOVA TIMSHINA	TU CENTRAL CAMPUS	KRITIPUR KATHMANDU	MBS	MASTERS	2075/11
28	SUJAN TAMANG	TU CENTRAL CAMPUS	KRITIPUR, KATHMANDU	MBS	MASTERS	2075/11
29	SUNITA ACHARYA	DAMAK MULTIPLE CAMPUS	DAMAK, JHAPA	MBS	MASTERS	11/02/2075
30	YUBARAJ RAI	DAMAK MULTIPLE CAMPUS	DAMAK, JHAPA	MBS	MASTERS	2075

Employed and Further Studies (E&FS)

		Employed				Further Studies		
S n	Name of the Students	Institutions	Type of Institution	Time	Designation	Program	Levels	Campus/University Name
1	ARJUN NEUPANE	NIC ASIA BANK	PRIVATE	FULL TIME	ASSISTANT	MBS	MASTERS	DAMAK MULTIPLE CAMPUS
2	BIDHYA SUNUWAR	SHREE HIMALAYAN SCONDARY SCHOOL	PUBLIC	FULL TIME	TEACHER	MBS	MASTERS	DAMAK MULTIPLE CAMPUS
3	KUBER DHAKAL	KANKAI BIKES BANK LTD.	PRIVATE	FULL TIME	JR. ASSISTENT	MBS	MASTERS	DAMAK MULTIPLE CMAPUS
4	NIKESH THAPA	SUNRISE MODEL SCHOOL	PRIVATE	FULL TIME	TEACHER	MBS	MASTES	DAMAK MULTIPLE CMAPUS
5	PRAMILA NEUPANE	NIC ASIA BANK LIMITED	PRIVATE	FULL TIME	TRAINEE ASSISTANT	MBS	MASTERS	SNATAKOT TAR CAMPUS
6	RANJANA KHANAL	HIMJOTO ENGLISH BOARDING SCHOOL	PRIVATE	FULL TIME	TEACHER	MBS	MASTERS	DAMAK MULTIPLE CAMPUS
7	YOGESH	SAGARMATHA	PRIVATE	FULL	ASST.	MBS	MAST	DAMAK

MAGAR	INSURANCE		TIME		ERS	MULTIPLE CAMPUS
-------	-----------	--	------	--	-----	-----------------

Self Employment

S n	Name of the Students	Starting Year	Type of Work
1	JIVAN DHUNGEL	2076	LEKHAPADI

Annex : 2bTracer Study Profile of Damak Multiple Campus Damak,Jhapa

Graduation Year: 2018 Level :Bachelor Degree Faculty: Education

Status: E=Employed=Unemployed FS= Studying E&FS=Employed and Further Study ,*=EDJ(Educationally Disadvantage and Janjati),D=Dalit

S N	NAME OF STUDENT	Sex	Brahmin/chetra	Adhibashi/janajati	Madesh	EDJ	Dalit	Status	Faculty	Reg. No	Contact Number
1	BALARAM PANDEY	M	*					E	B.ED.	9-2-202-0403-2007	9842639331
2	BHUWN THULUNG RAI	M		*				U	B.ED.	9-2-0202-0488-2012	98160242526
3	RUPA BARAL	F	*					U	B.ED.	9-2-202-268-2014	9824012471
4	PRABINA LIMBU	F		*				FS	B.ED.	9-2-0202-0234-2011	9824031106
5	RAJ KUMAR LIMBU	M		*				U	B.ED.	9-2-202-402-2013	9824012682
6	RINA RAI	F		*				U	B.ED.	9-2-0202-0404-2013	9817065873
7	SANDIP THAPA	M	*					E&FS	B.ED.	9-2-0202-0415-2013	9824920175
8	SHILA PRADHAN	F		*				E	B.ED.	9-2-0202-0417-2013	9817097633
9	SONAM MENYANGBO LIMBU	M		*				E	B.ED.	9-2-0202-0434-2012	9807969189

1 0	SUMINA LAWATI	F		*				E	B.ED.	9-2-0202-0283- 2011	98149273 41
1 1	SUNITA RAI	F		*				U	B.ED.	9-2-0202-0437- 2013	98179471 88
1 2	MANITA RAI	F		*				E	B.ED.	9-2-202-375-2013	98179075 61
1 3	LAXMI DHAKAL	M	*					U	B.ED.	9-2-202-290- 2010	98426441 66
1 4	RAJAN NEPALI	M				*	*	FS	B.ED.	9-2-202-269- 2014	98049251 62

Graduates status summary

:

Total Graduates	18
Traced Graduates	14
Untraced	6
Male (M)	7
Female (F)	7
Employed (E)	5
Only Graduates Further Study (FS)	2
Employed and Furthers Studies (E&FS)	1
Self Employed	0
Unemployed (U)	6
EDJ	1
Dalits	1
Brahmin/Chhetri	4
Other/Janjati	9
Madeshi	0

B.ED

Damak Multiple Campus
Level: Bachelor's Program : Education

**Only employed
Stutas (E)**

S n	Name of the Students	Institutions	Address	Types of Institution	Timi	Designation
1	SHILA PRADHAN	TAPLEJUNG BASIC LEVEL SCHOOL	NALBU,TAPLEJUNG	PUBLIC	FULL TIME	TEACHER
2	SONAM MENYANGBO LIMBU	GORKHA WALFARE TRUST	DAMAK-8,JHAPA	GOVERNMENT	PART TIME	MEDICAL CLAIMS ADMINISTRATOR
3	SUMINA LAWATI	SHREE KURUMBA SECONDARY SCHOOL	MIKLAJUNG-5,PANCHTHAR	GOVERNMENT	FULL TIME	TEACHER
4	BALARAM PANDEY	NIC ASIA BANK LIMITED	THAPATHELI,KATHMANDU	PRIVATE	FULL TIME	OFFICER
5	MANITA RAI	SHREE PRETHIVINAGARAN PRIMARY SCHOOL	GAURIGUNJ,JHAPA	GOVERNMENT	FULL TIME	TEACHER

Only Further Studies(FS)

S n	Name of the Students	Campus/University Name	Campus Address	Program	Levels	Enrolment Year
1	PRABINA LIMBU	URLABARI MULTIPLE CAMPUS	URLABARI, MORANG	M.ED. IN POP.	MASTERS	2075/05
2	CHHALIMAYA KUMAL	TRIBHUWAN UNIVERSITY	KRITIPUR KATHMANDU	M.ED.	MASTERS	2076

3	RAJAN NEPALI	DAMAK MULTIPLE CAMPUS	DAMAK,JHAPA	M.ED	MASTE RS	2075/11
---	-----------------	-----------------------------	-------------	------	-------------	---------

**Employed and Further Studies
(E&FS)**

		Employed					Further Studies		
S n	Name of the Students	Institutions	Address	Type of Institution	Time	Designation	Progr am	Levels	Campus/Unive rsity Name
1	SANDIP THAPA	JAYA PATHIVARA SECONDARY SCHOOL	SHARNAMATI- 3,JHAPA	PRIVATE	PART TIME	TEACHER	M.ED.	MASTE RS	KANKAI MULTIPLE CAMPUS

Annex : 2c Tracer Study Profile of Damak Multiple Campus Damak,Jhapa

Graduation Year: 2018

Level :Bachelor Degree

Faculty: Humanities

Status: E=Employed=Unemployed FS= Studying E&FS=Employed and Further Study ,*=EDJ(Educationally Disadvantage and Janjati),D=Dalit

S N	NAME OF STUDENT	Se x	Brahmin/chett rai	janajati/oth er	ED J	Dali t	Mades hi	Statu s	Fucalt y	Reg. No	Contact Number	Remar k
1	BIKRAM SHERMA	M			*			FS	B.A.	6-2-202-112- 2015	98079690 66	
2	GOMA RAI	F		*				FS	B.A.	6-2-0202-0112- 2015	98159966 82	
3	KISHAN MOHARA	M			*	*		E	B.A.	6-2-0202-0365- 2014	98140881 87	
4	MEKPIS LIMBU	M		*				U	B.A.	6-2-0202-0116- 2015	98079525 06	

Graduates status summary :	
Total Graduates	6
Traced Graduates	4
Untraced	2
Male (M)	3
Female (F)	1
Employed (E)	1

Only Graduates Further Study (FS)	2
Employed and Furthers Studies (E&F)	0
Self Employed	0
Unemployed (U)	1
EDJ	2
Dalits	1
Brahmin/Chhetri	0
Adhibashi/Janjati	3
Madhise	0

Annex : 2d Tracer Study Profile of Damak Multiple Campus Damak,Jhapa

Graduation Year: 2018 Level :Bachelor Degree

Faculty: Science

Status: E=Employed=Unemployed FS= Studying E&FS=Employed and Further Study ,*=EDJ(Educationally Disadvantage and Janjati),D=Dalit

S N	NAME OF STUDENT	Sex	Brahmin/Chhetri	Adhibashi/Janajati	EDJ	Dalit	Madeshi	Status	Faculty	Reg. No	Contact Number
1	AASHIS SAPKOTA	M	*					E	B.SC.	5-2-202-289-2014	9844676837
2	ANIL ACHERYA	M	*					FS	B.SC.	5-2-202-290-2014	9863712885
3	ARUN RAI	M		*				U	B.SC.	5-2-0202-0293-2014	9815031643
4	BABITA KOIRALA	F	*					FS	B.SC.	5-2-0202-0296-2014	9844676152
5	BIBEK ADHIKARI	M	*					E	B.SC.	5-2-0202-0303-2014	9815950542
6	BIJAYEETA TALIPA	F			*			FS	B.SC.	5-2-0202-0302-2014	9816951136
7	BIKASH NIROULA	M	*					FS	B.SC.	5-2-0202-0299-2014	9817015800
8	BINOD BASENT	M	*					FS	B.SC.	5-2-0202-0294-2014	9840015892
9	BISHESH MUKARUNG RAI	M		*				FS	B.SC.	5-2-0202-0301-2014	9817070152

10	DEWARAJ BASTOLA	M	*					E	B.SC.	5-2-0202-0018-2013	9815948358
11	DHANRAJ LAWATI	M		*				FS	B.SC.	5-2-0202-0307-2014	9811092355
12	DILIP DHIMAL	M			*			U	B.SC.	5-2-0202-0305-2014	9807015252
13	KALPANA THAPA	F	*					FS	B.SC.	5-2-0202-0315-2014	9801452681
14	KIRAN NEPAL	M	*					FS	B.SC.	5-2-0202-0027-2013	9815987050
15	KUMAR DHAMALA	M	*					FS	B.SC.	5-2-0202-0314-2014	9806087576
16	LOCHAN CHONGWANG LIMBU	M		*				U	B.SC.	5-2-0202-0316-2014	9806088242
17	MADAN SAPKOTA	M	*					E	B.SC.	5-2-0202-0318-2014	9860274412
18	MANILA NEUPANE	F	*					U	B.SC.	5-2-0202-0322-2014	9866793976
19	MANISH POKHREL	M	*					FS	B.SC.	5-2-0202-0320-2014	9807985316
20	MANITA KHATRI	F	*					FS	B.SC.	5-2-0202-0319-2014	9842699685
21	MANJU NEUPANE	F	*					FS	B.SC.	5-2-0202-0323-2014	9817978113
22	NABINA ACHARYA	F	*					FS	B.SC.	5-2-0202-0326-2014	9842763641
23	POSHAN SAPKOTA	M	*					E	B.SC.	5-2-0202-0330-2014	9812374455
24	PRADIP ADHIKARI	M	*					U	B.SC.	5-2-0202-0329-2014	9816922043
25	RABIN ANGDEMBEY	M		*				U	B.SC.	5-2-0202-0037-2013	9824012564
26	RAJ BOGATI	M			*	*		FS	B.SC.	5-2-0202-0339-2014	9811723321
27	ROHIT AGRAWAL	M					*	E	B.SC.	5-2-0202-0335-2014	9812396230
28	ROJILA GHIMIRE	F	*					FS	B.SC.	5-2-0202-0332-2014	9814931776
29	ROSHANI GHIMIRE	F	*					FS	B.SC.	5-2-0202-0333-	98140981

										2014	17
30	SAGAR BHATTARAI	M	*					E	B.SC.	5-2-0202-0342-2014	9844600603
31	SAMIKSHYA KUNWAR	F	*					U	B.SC.	5-2-0202-0356-2014	9814087701
32	SANGAM POUDEL	F	*					U	B.SC.	5-2-0202-0347-2014	9801446153
33	SAROJ BASNET	M	*					FS	B.SC.	5-2-0202-0349-2014	9814918080
34	SAURAV KATUWAL	M	*					FS	B.SC.	5-2-0202-0341-2014	9801452682
35	SEWAN LIMBU	M		*				E	B.SC.	5-2-0202-0350-2014	9804924549
36	SHEELA K.C.	F	*					E	B.SC.	5-2-0202-0353-2014	9817928070
37	SUBASH RAI	M		*				FS	B.SC.	5-2-0202-0355-2014	9861778003
38	JIJAN KARKI	M	*					U	B.SC.	5-2-202-310-2014	9807978818

Graduates status summary :

Total Graduates	42
Traced Graduates	38
Untraced	4
Male (M)	26
Female (F)	12
Employed (E)	9
Only Graduates Further Study (FS)	20
Employed and Furthers Studies (E&F)	0
Self Employed	0
Unemployed (U)	9
EDJ	3
Dalits	1
Brahmin/Chhetri	27
Adhibashi/Janjati	7
Mashise	1

Damak Multiple Campus
Level : Bachelors Degree Program: Science

Only employed Stutas (E)

S n	Name of the Students	Institutions	Address	Types of Institution	Timi	Designation
1	AASHIS SAPKOTA	GLOBAL EDUCATION ACADEMY	DAMAK-6,JHAPA	PRIVATE	FULL TIME	TEACHER
2	BIBEK ADHIKARI	HIMALI ENGLISH SCHOOL	KAMAL-6,JHAPA	PRIVATE	FULL TIMEE	TEACHER
3	DEWARAJ BASTOLA	TIBHUWAN BASIC SCHOOL	PHALGUNANDA-2,PANCHTHAR	PRIVATE	FULL TIMEE	TEACHER
4	MADAN SAPKOTA	SAPTA SHREE ACADEMY SCHOOL	DAMAK-9,JHAPA	PRIVATE	FULL TIME	TEACHER
5	POSHAN SAPKOTA	HIMCHULI BOARDINGSCHOOL	URLABARI,MORANG	PRIVATE	FULL TIME	TEACHER
6	ROHIT AGRAWAL	SHIVA BASTRALAYA	PATCHRAI,MORANG	PRIVATE	FULL TIME	ACCOUNTANT
7	SAGAR BHATTARAI	BASANDHARA BHATASHI	KATARI-3,	PRIVATE	FULL TIME	LAB TECHNICAN
8	SEWAN LIMBU	DURGA MA.VI.	URLABARI,MORANG	GOVERNMENT	FULL TIME	TEACHER
9	SHEELA K.C.	GLOBAL EDUCATIONAL ACADEMY	DAMAK-6,JHAPA	PRIVATE	FULL TIME	TEACHER

Only Further Studies(FS)

S n	Name of the Students	Campus/University Name	Campus Address	Program	Levels	Enrolment Year
1	ANIL ACHERYA	CENTRAL CAMPUS TU	KRITIPUR ,KATHMANDU	M.SC. IN PHYSIC	MASTERS	2075/11
2	BABITA KOIRALA	PATAN MULTIPLE CAMPUS	PATANDHOKA,LALITPUR	M.SC.IN PHYSIC	MASTERS	2075/12
3	BIJAYEETA TALIPA	COLLAGE OF APLIDE SCIENCE	THAPATHELI,KATHMANDU	M.SC.IN ENVIRONMENT	MASTERS	2075/12
4	BIKASH NIROULA	CENTRAL DEPATNMENT	KRITIPUR,KATHMANDU	M.SC.IN	MASTERS	2075/12

		CAMPUS		CHEMISTRY	S	
5	BINOD BASENT	PATAN MULTIPLE CAMPUS	PATANDHOKA,LALITPUR	M.SC.IN PHYSIC	MASTERS	2075/12
6	BISHESH MUKARUNG RAI	TU CENTRAL CAMPUS	KRITIPUR,KATHMANDU	M.SC. IN PHYSIC	MASTERS	2075/12
7	DHANRAJ LAWATI	AMRIT SCIENCE CAMPUS	THAMEL,KATHMANDU	M.SC.IN PHISYC	MASTERS	2075/12
8	KALPANA THAPA	CENTRAL DEPATNMENT CAMPUS	KRITIPUR,KATHMANDU	M.SC.IN CHEMISTRY	MASTERS	2075/11
9	KIRAN NEPAL	PATAN MULTIPLE CAMPUS	PATANDHOKA,LALITPUR	M.SC.IN PHYSIC	MASTERS	2075/12
10	KUMAR DHAMALA	CENTRAL CAMPUS TU	KRITIPUR,KATHMANDU	M.SC. IN PHYSIC	MASTERS	2075/11
11	MANISH POKHREL	TRICHANDRA MULTIPLE CAMPUS	RATNAPARK, KATHMANDU	M.SC. IN CHEMISTRY	MASTERS	2075/12
12	MANITA KHATRI	PATAN MULTIPLE CAMPUS	PATANDHOKA, LALITPUR	M.SC. IN PHYSIC	MASTERS	2075/12
13	MANJU NEUPANE	AMRIT SCIENCE CAMPUS	THAMEL,KATHMANDU	M.SC. IN CHEMISTRY	MASTERS	2075/11
14	NABINA ACHARYA	TRICHANDRA MULTIPLE CAMPUS	GHANTAGHAR,KHATMANDU	M.SC.IN CHEMISTRY	MASTERS	2075/12
15	RAJ BOGATI	AMRIT SEIENCE CAMPUS	KATHMANDU	M.SC.	MASTERS	2075/11
16	ROJILA GHIMIRE	CENTRAL DEPATNMENT CMAPUS TU	KRITIPUR,KATHMANDU	M.SC.IN PHYSIC	MASTERS	2075/12
17	ROSHANI GHIMIRE	PATAN MULTIPLE CAMPUS	PATANDHOKA,KATHMANDU	M.SC. IN PHYSIC	MASTERS	2075/12
18	SAROJ BASNET	PATAN MULTIPLE CAMPUS	PATANDHOKA,KATHMANDU	M.SC.IN PHYSIC	MASTERS	2075/12
19	SAURAV KATUWAL	CENTRAL DEPATNMENT CMAPUS TU	KRITIPUR,KATHMANDU	M.SC.IN CHEMISTRY	MASTERS	2075/12
20	SUBASH RAI	GOLDEN GATE CAMPUS	BATHISH PUTALI KATHMANDU	M.SC. IN PHYSIC	MASTERS	2075/12

Annex : 2eTracer Study Profile of Damak Multiple Campus Damak,Jhapa

Graduation Year: 2018 Level :Masters Degree

Faculty: Management(MBS)

Status: E=Employed=Unemployed FS= Studying E&FS=Employed and Further Study ,*=EDJ(Educationally Disadvantage and Janjati),D=Dalit

S N	NAME OF STUDENT	Sex	Brahmin/Chettra	Janajati/other	Madhesi	EDJ	Dalit	Status	Program	Reg. No	Viva Date	Contact No.
1	ANJANA DAHAL	F	*					E	MBS	7-2-736-5-2011	06/19/2075	9814999753
2	BIJU ARCHARYA	F	*					E	MBS	7-2-202-229-2007	09/05/2075	9842667329
3	BIKASH BHANDARI	M	*					E	MBS	7-2-202-307-2006	12/15/2074	9842666147
4	BINITA KHANAL	F	*					E	MBS	7-2-202-120-2008	05/09/2075	9815926861
5	DAKSHINA RAI	F		*				U	MBS	7-2-202-347-2011	08/13/2075	9814019764
6	DIPAK SHIWAKOTI	M	*					S	MBS	7-1-202-459-2002	10/29/2074	9842764642
7	DIPIKA GAUTAM	M	*					U	MBS	7-2-899-6-2011	06/19/2075	9863804550
8	GANGA DEVI SHRESTHA	F		*				E	MBS	7-2-735-24-2008	2074/1029	9815365148
9	GANITA DHIMAL	F				*		E	MBS	7-2-735-11-2007	06/19/2075	9807963187
10	GENISHA SANGRAULA	F	*					E	MBS	7-2-202-78-2012	09/13/2075	9842795482
11	HEMA SHERMA	F				*		U	MBS	7-2-560-5-2009	10/22/2074	9817934964
12	HIRA SHRESTHA	F		*				U	MBS	7-2-202-0461-2010	10/22/2074	9807996061
13	JAMUNA DEVI SHRESTHA	F		*				E	MBS	7-2-735-30-2008	03/01/2075	9808639726

1 4	LEKHNATH OJHA	M	*					E	MBS	7-2-677-182-2012	205/02/01	9824937540
1 5	MAHESH CHANDRA NEPAL	M	*					E	MBS	7-3-202-0375-2014	03/12/2018	9816971544
1 6	MUKESH SHRESTHA	M		*				E	MBS	7-1-202-145-2004	03/01/2075	9842139809
1 7	PINKI KANDAGWA	F		*				U	MBS	7-2-202-234-2009	05/09/2075	981694160
1 8	PRIYANKA ATAL	F			*			E	MBS	7-2-736-0120-2010	03/28/2018	9815374501
1 9	PUJAN BHANDARI	M	*					E	MBS	7-2-504-134-2006	09/05/2075	9808853768
2 0	RAM BABADUR KARKI	M	*					E	MBS	7-2-426-33-2007	12/15/2074	9817944158
2 1	ROSHIS BUDHATHOKI	M	*					E	MBS	7-2-355-33-2010	06/19/2075	9824397356
2 2	SANJIB MADAIYA	M				*		E	MBS	7-2-736-0075-2010	2075/03/32	9807913970
2 3	SANTOSH BUJGAIN	M	*					E	MBS	7-2-504-152-2011	09/05/2075	9817919217
2 4	SHAMBHU BISHWAKARMA	M				*	*	E	MBS	7-2-215-86-2005	18/05/15	981534360
2 5	SHANTIRAM KHANAL	M	*					E	MBS	7-2-736-29-2008	10/29/2074	9801552005
2 6	SHARMILA SITOULA	F	*					E	MBS	7-2-736-0079-2010	08/13/2075	9809233599
2 7	SHOVA BHATTARAI	F	*					E	MBS	7-2-215-46-2003	09/05/2075	9844679637
2 8	SHYAM BABU SHAH	M			*			S	MBS	7-2-202-272-2009	10/29/2074	9807905883
2 9	SUJATA DHAKAL	F	*					E	MBS	7-1-202-219-2004	12/03/2018	9860632556
3	SUNITA SHRESTHA	F		*				U	MBS	7-2-627-	06/19/2	9842164

0										0123-2011	075	991
3 1	SURYA KUMAR LIMBU	M		*				U	MBS	7-2-202-280- 2007	05/15/2 018	9806040 222
3 2	TEJ PRASAD ADHAKARI	M	*					E	MBS	7-2-504-185- 2009	11/28/2 074	9842754 209
3 3	UMA DEVI BHATTARAI	F	*					E	MBS	7-2-202- 0536-2011	01/02/2 075	9863629 575
3 4	YAMNATH ADHIKARI	M	*					E	MBS	7-1-202-935- 99	06/19/2 075	9805366 143
3 5	YAMUNA BHATTARAI	F	*					U	MBS	5-2-358-33- 2005	01/02/2 075	9864002 559

**Graduates status
summary :**

Total Graduates	51
Traced Graduates	35
Untraced	17
Male (M)	17
Female (F)	18
Employed (E)	25
Only Graduates Further Study (FS)	0
Employed and Furthers Studies (E&F)	0
Self Employed	2
Unemployed (U)	8
EDJ	4
Dalits	1
Brahmin/Chhetri	21
Other/Janjati	8
Madheshi	2

Damak Multiple Campus
Master's Levels

Only employed Stutas (E)

Program : Management Level Master's

Sn	Name of the Students	Institutions	Address	Types of Institution	Timi	Designation
1	SHANTIRAM KHANAL	NAYA BATO MULTIPURPOSE CO-OPERATIVE	DAMAK MUNICIPALITY-6,JHAPA	PRIVATE	FULL TIME	ASSISTANT
2	SANTOSH BUJGAIN	KAMANA BIKAS BANK LIMITED	DAMAK,JHAPA	PRIVATE	FULL TIME	SUPERVISOR
3	BINITA KHANAL	SHWARNLAXMI CO-OPERATIVE PVT.LTD	DAMAK-8,JHAPA	PRIVATE	FULL TIME	ASSISTANT
4	PUJAN BHANDARI	KABELI BIKAS BANK	DHANKUTA	PRIVATE	FULL TIME	ASSISTANT
5	SHARMILA SITOULA	RELIANCE INSURANCE	URLABRI,JHAPA	PRIVATE	FULL TIME	BRANCH MANAGER
6	GENISHA SANGRAULA	NEPAL BANK LIMITED, ILAM	ILLAM	PUBLIC	FULL TIME	ASSISTANT
7	GANGA DEVI SHRESTHA	C.E. CONSTRUCTION	TRIPURASHWOR,KATHMANDU	PRIVATE	FULL TIME	MARKETING SELS ASST.
8	TEJ PRASAD ADHAKARI	HIMALAYA MA.VI	DAMAK-2,JHAPA	GOVERNMENT	FULL TIME	TEACHER
9	RAM BABADUR KARKI	MEGA BANK NEPAL LTD	DAMAK MUNICIPALITY-6,JHAPA	PUBLIC	FULL TIME	SUPERVISOR
10	BIKASH BHANDARI	NIC ASIA BANK LTD.	DAMAK,JHAPA	PRIVATE	FULL TIME	ASSISTANT
11	JAMUNA DEVI SHRESTHA	GODAWARI RESIDENTIAL SCHOOL	BADEGAUN, GODAWARI, LALITPUR	PRIVATE	FULL TIME	TEACHER

12	MUKESH SHRESTHA	PRIME COMMERCIAL BANK LTD.	GAURADAHA,-1,JHAPA	PRIVATE	FULL TIME	ASSISTANT
13	LEKHNATH OJHA	KANKAI PLY WOOD INDUETRIES	BIRTAMODE JHAPA	PRIVATE	FULL TIME	ACCOUNTANT
14	SHAMBHU BISHWAKARMA	SHREESUNGHODA SECONDARY SCHOOL	URLABARI-2, MORANG	PUBLIC	FULL TIME	TEACHER
15	UMA DEVI BHATTARAI	JANAMUKHI SAHAKARI SASTHA. Ltd.	DAMAK-6,JHAPA	PRIVATE	FULL TIME	ASSISTANT
16	SANJIB MADAIYA	SIDDHARTHA BANK LTD.	DAMAK-6,JHAPA	PRIVATE	FULL TIME	ASSISTANT
17	BIJU ARCHARYA	THE EVEREST SAVING AND CREDIT CO-OPORTETIVE	KAMAL-3,JHAPA	PRIVATE	FULL TIME	BRANCH MANAGER
18	SHOVA BHATTARAI	NMB BANK LIMITED	KAMAL-3,JHAPA	PRIVATE	FULL TIME	OPERATION INCHARGE
19	ROSHIS BUDHATHOKI	PRIME COMMERCIAL BANK LTD.	MANGLABARE,URLABARI	PRIVATE	FULL TIME	BRANCH MANAGER
20	YAMNATH ADHIKARI	BHRIKUTI MODEL CAMPUS	URLABARI,MORANG	PRIVATE	FULL TIME	TEACHER
21	GANITA DHIMAL	MIRMIRE SAVING AND CREDIT CO-OPERATIVE LTD.	DAMAK-5,JHAPA	PRIVATE	FULL TIME	ASSISTANT
22	ANJANA DAHAL	TULASHI CO-OPERATIVE	DAMAK,JHAPA	PRIVATE	FULL TIME	ASSISTANT
23	SUJATA DHAKAL	MOTHERLAND ENGLISH BOARDING SCHOOL	DAMAK,JHAPA	PRIVATE	FULL TIME	TEACHER
24	MAHESH CHANDRA NEPAL	UNIQUE COLLAGE	DAMAK,JHAPA	PRIVATE	PART TIME	TEACHER
25	PRIYANKA ATAL	NIC ASIA BANK	URLABARI,MORANG	PRIVATE	FULL TIME	ASSISTANT
	Self Employment					
Sn	Name of the Students	Starting Year	Type of Work			
1	SHYAM BABU SHAH	2060	BUSINESS			

2	DIPAK SHIWAKOTI	2073	HOTEL
---	--------------------	------	-------

ANNEX-3: Strengths and Weaknesses of the Institutional Program

Campus Name: Damak Multiple Campus

TRACRED LIST FOR BACHELOR LEVEL/ GRADUATE IN THE YEAR 2018

S n	Name of the Students	Program	Relevance of the program to your professional	Extracurricular activities	Problem Solving ability	Work placement /Attachment / Internship	Teaching /Learning environment	Quality of Education Delivered	Teacher Student Relationship	Library Facility	Lab Facility	Sports Facility	Canteen / Urinals etc
1	Aazad Ansari	BBS	3	4	3	4	3	4	3	3	4	5	4
2	Anjana Chamlagain	BBS	1	1	3	3	2	1	4	5	4	5	1
3	Apshara Rai	BBS	5	2	4	5	5	5	4	5	5	4	5
4	Arjun Neupane	BBS	1	2	5	3	1	2	5	1	1	1	2
5	Bidhya Sunuwar	BBS	4	3	4	1	3	3	5	5	3	3	3
6	Bijaya Rai	BBS	1	0	2	5	4	4	4	4	5	5	4
7	Bijita Khanal	BBS	5	5	5	5	5	5	5	5	5	5	5
8	Bikram Shrestha	BBS	4	4	4	3	5	4	5	3	1	3	1
9	Deepa Bhattarai	BBS	3	3	4	4	5	5	5	5	5	4	4
10	Durga Bahdur Basnet	BBS	2	2	2	3	3	3	3	2	2	2	1
11	Elisha Rai	BBS	2	3	3	0	2	3	2	4	3	3	2
12	Ishwor Kafle	BBS	2	2	2	2	5	5	4	4	5	4	5
13	Jenish Khadka	BBS	3	3	4	1	4	4	5	5	5	5	4
14	Jivan Dhungel	BBS	5	3	4	2	4	3	5	5	1	2	2

1			2	2	3	3	5	5	4	2	2	2	2
5	Kabita Bhattarai	BBS											
1			5	3	4	3	5	5	5	5	4	5	5
6	Kuber Dhakal	BBS											
1			1	1	3	3	2	4	4	5	5	4	3
7	Lila Gautam	BBS											
1			1	3	3	5	5	4	3	2	4	5	4
8	Manisha Magar	BBS											
1			3	4	4	0	2	3	4	5	5	3	4
9	Manisha Thapa	BBS											
2	Milan Kumar		3	2	3	3	3	3	3	2	1	1	2
0	Kadariya	BBS											
2			2	2	3	1	2	3	4	5	5	2	3
1	Muna Khanal	BBS											
2			3	2	4	5	5	5	4	5	5	4	2
2	Muna Shrestha	BBS											
2			4	3	2	3	5	2	4	3	2	4	2
3	Nikesh Thapa	BBS											
2			3	4	3	2	3	3	3	3	4	4	5
4	Omnath Adhikari	BBS											
2			3	4	4	4	4	5	5	3	3	4	4
5	Prakash Limbu	BBS											
2			5	5	4	5	3	5	5	5	2	4	4
6	Pramila Neupane	BBS											
2			3	2	5	3	3	3	3	3	2	1	2
7	Prema Tamang	BBS											
2			4	3	3	4	3	4	5	3	4	2	4
8	Raj Poudel	BBS											
2			5	4	1	5	5	5	5	5	5	5	5
9	Ranjana Khanal	BBS											
3			5	5	5	5	5	5	5	5	5	5	4
0	Ranju Kumal	BBS											
3	Rubi Thapa	BBS	3	3	3	3	2	3	3	3	3	4	2

1	Magar												
3			2	4	3	4	4	4	4	5	4	3	2
2	Samir Bhattarai	BBS											
3			3	4	4	4	3	3	4	3	5	3	4
3	Samjhana Kerung	BBS											
3			5	5	5	5	5	5	5	5	5	5	5
4	Sanjit Lawati	BBS											
3	Sanjog		3	3	4	1	3	3	4	5	4	5	4
5	Khatiwada	BBS											
3			5	5	5	5	5	5	5	5	5	5	4
6	Sapana Limbu	BBS											
3			0	0	1	1	1	1	3	3	3	4	5
7	Satyam Khanal	BBS											
3			5	5	5	5	5	5	5	5	5	4	5
8	Shanta Bastola	BBS											
3			3	3	4	5	3	4	4	5	5	4	4
9	Shova Timshina	BBS											
4			5	5	5	5	5	5	5	5	5	5	5
0	Sujan Tamang	BBS											
4			3	3	4	2	5	5	5	4	2	1	2
1	Sunita Acharya	BBS											
4			2	4	3	3	4	3	2	5	4	1	3
2	Susmita Prasai	BBS											
4			2	2	3	3	3	3	3	3	2	0	1
3	Yogesh Magar	BBS											
4			3	3	3	3	3	3	5	5	4	4	4
4	Yubaraj Rai	BBS											
4			3	4	3	4	2	3	4	3	3	3	4
5	Kajinsara Karki	BBS											
4			3	3	2	3	3	2	4	4	3	3	3
6	Renuka Baskota	BBS											
4			3	4	4	4	4	5	5	4	5	4	4
7	Anu Shah	BBS											

48	Aruna Thapa	BBS	2	3	2	2	4	2	5	4	1	1	2
49	Mirina Thebe	BBS	2	1	3	3	2	2	3	3	2	2	3
50	Manish Shrestha	BBS	3	3	4	1	2	3	5	5	4	3	4
51	Ranjit Kumar Raya	BBS	3	3	0	2	3	4	5	5	4	3	1
52	Rabina Rai	BBS	2	3	2	2	4	3	5	3	2	1	2
53	Sabnam Iwaram Thebe	BBS	3	4	4	5	3	3	4	4	2	2	4
54	Kamala Karki	BBS	3	4	4	5	3	4	2	4	5	4	4
55	Sanam Rai	BBS	4	5	5	5	4	5	5	5	5	5	4
56	Sarasma Bhandari	BBS	5	5	5	5	5	5	5	5	5	5	5
57	Arun Rai	B.SC.	5	2	1	0	3	3	5	5	5	3	1
58	Anil Acherya	B.SC.	5	3	3	4	4	2	4	5	1	0	3
59	Babita Koirala	B.SC.	1	3	5	0	1	3	1	3	4	2	1
60	Bibek Adhikari	B.SC.	5	1	4	0	4	4	5	4	5	1	4
61	Bijayeeta Talipa	B.SC.	0	3	2	0	4	4	5	4	5	5	1
62	Bikash Niroula	B.SC.	2	4	3	2	4	5	3	4	3	3	3
63	Binod Basent	B.SC.	1	4	2	0	2	3	0	4	3	3	0
64	Bishesh	B.Sc.	4	4	4	3	4	4	4	4	4	4	4

4	Mukarung Rai												
6			2	1	3	2	4	1	2	3	4	1	2
5	Dewaraj Bastola	B.Sc.											
6													
6	Dhanraj Lawati	B.SC.	3	3	1	2	3	1	2	3	1	0	5
6													
7	Dilip Dhimal	B.SC.	5	2	1	2	3	1	4	2	3	1	2
6													
8	Kalpana Thapa	B.SC.	5	4	4	5	4	5	5	5	5	4	3
6													
9	Kiran Nepal	B.SC.	3	4	5	0	5	4	5	5	5	5	5
7													
0	Kumar Dhamala	B.SC.	3	3	4	1	3	4	3	5	5	4	4
	Lochan												
7	Chongwang												
1	Limbu	B.Sc.	3	4	4	4	4	3	4	4	4	4	4
7													
2	Madan Sapkota	B.Sc.	5	5	1	2	3	4	5	4	1	0	1
7													
3	Manila Neupane	B.SC.	5	5	4	3	5	1	2	4	4	2	5
7													
4	Manish Pokhrel	B.SC.	3	2	4	4	5	3	4	3	3	1	1
7													
5	Manita Khatri	B.SC.	5	5	5	5	5	5	5	5	5	5	5
7													
6	Manju Neupane	B.SC.	4	3	3	4	4	3	4	5	4	4	4
7													
7	Nabina Acharya	B.Sc.	0	4	2	0	4	4	5	5	5	5	2
7													
8	Poshan Sapkota	B.SC.	3	1	2	4	4	3	2	4	1	5	5
7													
9	Pradip Adhikari	B.SC.	3	3	3	2	5	5	5	5	5	5	5
8	Rabin	B.SC.	3	3	4	1	2	1	4	5	5	4	3

0	Angdembey												
8	1 Raj Bogati	B.SC.	5	4	5	4	4	4	5	5	5	3	3
8	2 Rohit Agrawal	B.SC.	5	2	1	2	3	4	2	3	4	1	2
8	3 Rojila Ghimire	B.SC.	0	1	2	3	4	5	4	3	2	1	0
8	4 Roshani Ghimire	B.SC.	2	3	2	2	3	3	3	2	2	2	2
8	5 Sagar Bhattarai	B.SC.	5	5	2	4	3	5	5	5	5	5	5
8	6 Samikshya Kunwar	B.SC.	0	4	2	4	4	5	5	5	5	5	2
8	7 Sangam Poudel	B.Sc.	3	3	2	3	4	5	5	4	5	4	4
8	8 Saroj Basnet	B.SC.	1	2	3	5	4	4	2	3	2	5	5
8	9 Saurav Katuwal	B.SC.	4	2	4	3	5	5	4	4	4	3	2
9	0 Sewan Limbu	B.Sc.	5	1	4	0	4	4	5	4	4	3	3
9	1 Sheela K.C.	B.SC.	2	4	2	0	4	4	5	5	5	5	1
9	2 Subash Rai	B.SC.	2	3	3	3	3	4	3	4	3	5	3
9	3 Aashis Sapkota	B.SC.	1	1	2	1	2	2	4	2	0	0	2
9	4 Ranjita Ghimire	B.SC.	5	5	5	5	5	5	5	5	5	5	5
9	5 Jijan Karki	B.SC.	5	5	4	4	2	2	5	5	5	5	5
9	6 Rina Rai	B.ED.	2	3	2	0	2	3	4	5	4	5	3

97	Sandip Thapa	B.ED.	1	3	4	4	5	5	5	5	5	0	3
98	Shila Pradhan	B.ED.	3	3	3	4	4	5	5	5	5	5	4
99	Sunita Rai	B.ED.	3	4	4	4	3	4	3	5	5	4	3
100	Bhuwn Thulung Rai	B.ED.	2	3	3	4	4	4	4	4	4	4	4
101	Sonam Menyangbo Limbu	B.ED.	5	3	4	0	0	0	0	0	0	5	4
102	Prabina Limbu	B.ED.	2	2	2	2	3	2	1	4	1	3	1
103	Raj Kumar Limbu	B.ED.	2	3	4	5	4	3	5	4	4	4	4
104	Sumina Lawati	B.ED.	1	2	2	2	1	1	1	1	1	1	1
105	Chhalimaya Limbu	B.ED.	2	1	3	4	0	1	2	4	3	0	5
106	Balaram Pandey	B.ED.	2	3	2	3	3	2	2	1	3	3	4
107	Manita Rai	B.ED.	3	4	5	5	5	4	3	5	3	5	3
108	Rajan Nepali	B.ED.	4	5	3	4	5	5	5	5	4	2	1

1 0 9	Laxmi Dhakal	B.ED.	5	5	5	5	5	5	5	5	5	5	5
1 1 0	Goma Rai	B.A.	4	3	2	3	5	3	3	5	5	5	5
1 1 1	Kishan Mohara	B.A.	3	2	2	3	4	3	4	2	2	2	2
1 1 2	Mekpis Limbu	B.A.	2	3	4	5	3	2	2	4	5	3	3
1 1 3	Bikram Sherma	B.A.	4	3	2	3	4	3	3	5	5	5	5
1 1 4	Shantiram Khanal	MBS	5	3	2	4	4	5	3	3	3	2	2
1 1 5	Santosh Bujgain	MBS	5	4	5	5	5	5	5	4	5	5	4
1 1 6	Binita Khanal	MBS	4	4	0	5	5	5	4	4	4	5	4
1 1 7	Pujan Bhandari	MBS	3	2	3	3	4	4	4	5	3	3	2
1 1 8	Sunita Shrestha	MBS	3	3	4	3	4	4	5	3	3	4	4
1 1 9	Dakshina Rai	MBS	5	4	3	4	5	4	3	5	5	4	3

1 2 0	Sharmila Sitoula	MBS	3	0	1	1	2	3	4	4	2	2	2
1 2 1	Genisha Sangraula	MBS	5	3	3	2	4	4	5	5	4	3	3
1 2 2	Hira Shrestha	MBS	2	3	4	2	4	2	5	3	0	1	2
1 2 3	Shyam Babu Shah	MBS	4	3	4	2	3	3	4	3	3	4	4
1 2 4	Dipak Shiwakoti	MBS	3	4	2	1	4	3	5	5	5	5	1
1 2 5	Ganga Devi Shrestha	MBS	3	5	3	1	3	3	3	3	3	3	1
1 2 6	Tej Prasad Adhakari	MBS	5	5	5	5	5	5	2	2	2	2	4
1 2 7	Priyanka Atal	MBS	3	2	4	4	4	5	5	5	4	4	4
1 2 8	Ram Babadur Karki	MBS	4	4	3	3	3	3	4	4	4	4	4
1 2 9	Mahesh Chandra Nepal	MBS	5	5	5	5	5	5	5	5	5	5	5
1 3 0	Bikash Bhandari	MBS	4	4	5	5	5	4	5	4	3	3	3

1 3 1	Jamuna Devi Shrestha	MBS	2	3	3	2	3	4	3	4	3	3	3
1 3 2	Mukesh Shrestha	MBS	3	4	5	4	4	5	5	5	3	5	4
1 3 3	Yamuna Bhattarai	MBS	5	5	5	5	5	5	5	5	5	5	5
1 3 4	Lekhnath Ojha	MBS	1	2	3	4	5	4	4	5	5	3	3
1 3 5	Shambhu Bishwakarma	MBS	2	3	3	4	5	4	5	5	4	5	4
1 3 6	Uma Devi Bhattarai	MBS	4	3	4	4	4	3	5	3	2	3	2
1 3 7	Sanjib Madaiya	MBS	2	0	2	3	3	4	3	2	3	4	5
1 3 8	Biju Archarya	MBS	3	3	4	2	3	4	4	2	5	4	5
1 3 9	Shova Bhattarai	MBS	3	3	3	3	4	3	4	4	4	4	4
1 4 0	Pinki Kandagwa	MBS	1	2	4	3	3	4	5	5	4	4	4
1 4 1	Roshis Budhathoki	MBS	5	5	5	5	5	5	5	5	5	5	5

1 4 2	Yamnath Adhikari	MBS	1	2	3	0	3	2	4	5	5	3	3
1 4 3	Dipika Gautam	MBS	4	4	5	4	5	5	4	5	5	5	2
1 4 4	Ganita Dhimal	MBS	3	3	4	4	4	4	4	3	3	4	4
1 4 5	Surya Kumar Limbu	MBS	3	3	4	3	4	4	5	3	3	4	4
1 4 6	Anjana Dahal	MBS	4	5	5	4	5	4	5	5	5	4	3
1 4 7	Hema Sherma	MBS	3	4	2	5	5	4	5	3	2	2	3

